



Andy Beshear
GOVERNOR

TRANSPORTATION CABINET

200 Mero Street
Frankfort, Kentucky 40601

Jim Gray
SECRETARY

June 17, 2024

CALL NO. 101
CONTRACT ID NO. 241106
ADDENDUM # 1

Subject: Hopkins County, NHPPIM 0691 (013)
Letting June 20, 2024

- (1) Revised - Layout Sheets - Pages 22, 24, 25, 27 & 29 of 201
- (2) Added - Plan Sheets - Pages 32A-32F of 201
- (3) Revised - Summary Sheets - Pages 40, 41, 45 of 201
- (4) Revised - References - Pages 72, 75 of 201
- (5) Revised - Wage Rates - Pages 182-194A of 201
- (6) Revised - Proposal Bid Items - Pages 199-201 of 201
- (7) Added Plans to Project Related Information

Proposal revisions are available at <http://transportation.ky.gov/Construction-Procurement/>.

If you have any questions, please contact us at 502-564-3500.

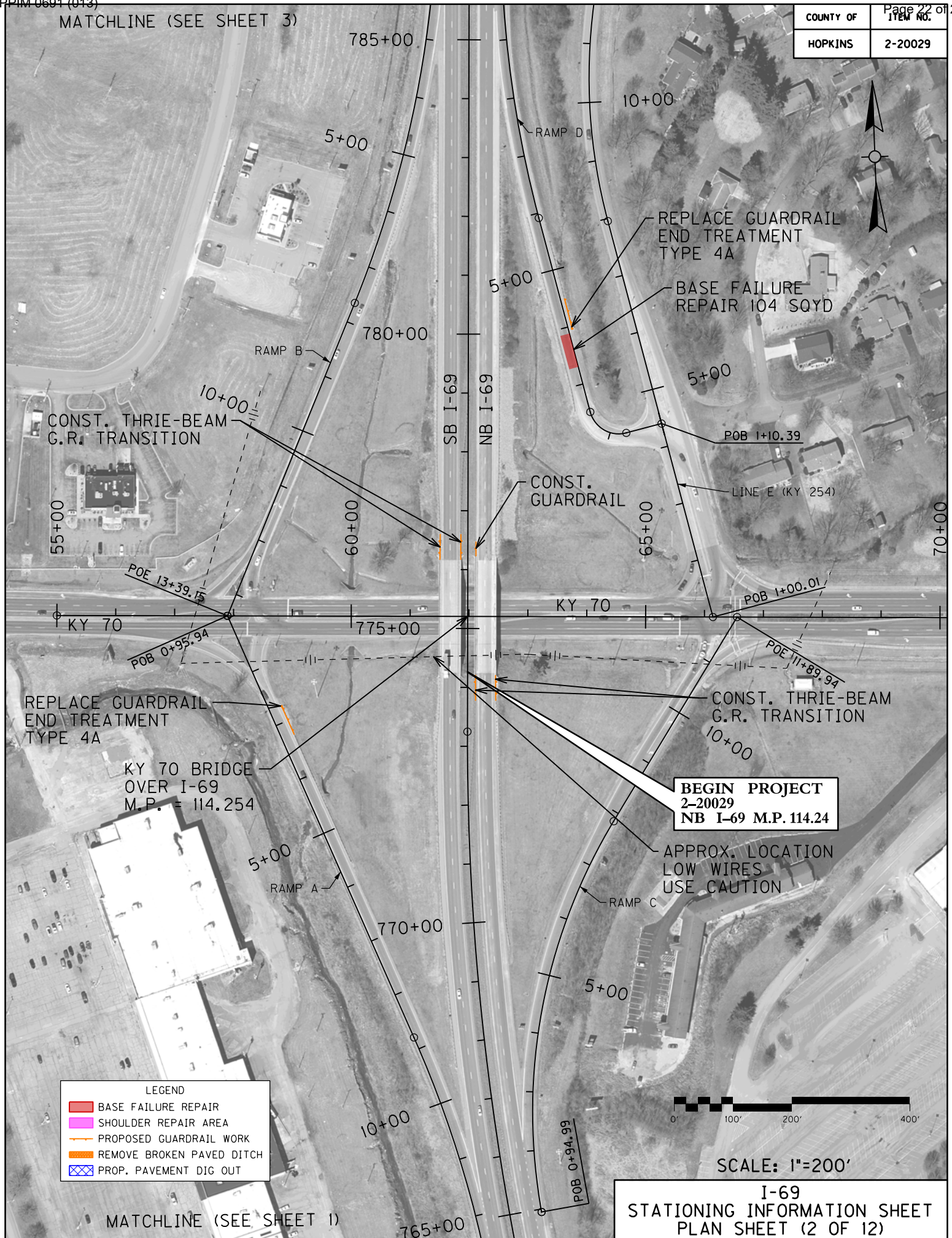
Sincerely,

A handwritten signature in black ink that reads "Rachel Mills".

Rachel Mills, P.E.
Director
Division of Construction Procurement

RM:mr
Enclosures

COUNTY OF	ITEM NO.
HOPKINS	2-20029



MATCHLINE (SEE SHEET 3)

CONST. THRIE-BEAM
G.R. TRANSITION

REPLACE GUARDRAIL
END TREATMENT
TYPE 4A

BASE FAILURE
REPAIR 104 SQYD

CONST.
GUARDRAIL

REPLACE GUARDRAIL
END TREATMENT
TYPE 4A

CONST. THRIE-BEAM
G.R. TRANSITION

KY 70 BRIDGE
OVER I-69
M.P. = 114.254

BEGIN PROJECT
2-20029
NB I-69 M.P. 114.24

APPROX. LOCATION
LOW WIRES
USE CAUTION

LEGEND

	BASE FAILURE REPAIR
	SHOULDER REPAIR AREA
	PROPOSED GUARDRAIL WORK
	REMOVE BROKEN PAVED DITCH
	PROP. PAVEMENT DIG OUT



SCALE: 1"=200'

I-69
STATIONING INFORMATION SHEET
PLAN SHEET (2 OF 12)

MATCHLINE (SEE SHEET 1)

MATCHLINE (SEE SHEET 5)

COUNTY OF	ITEM NO.
HOPKINS	2-20029

CONST. THRIE-BEAM
G.R. TRANSITION



825+00

820+00

815+00

810+00

SB I-69
NB I-69

MILE
1
1
5

LEGEND	
	BASE FAILURE REPAIR
	SHOULDER REPAIR AREA
	PROPOSED GUARDRAIL WORK
	REMOVE BROKEN PAVED DITCH
	PROP. PAVEMENT DIG OUT



SCALE: 1"=200'

MATCHLINE (SEE SHEET 3)

I-69
STATIONING INFORMATION SHEET
PLAN SHEET (4 OF 12)

MATCHLINE (SEE SHEET 6)

COUNTY OF	HOPKINS
ITEM NO.	2-20029



845+00

840+00

835+00

830+00

SB I-69
NB I-69

CONST. THRIE-BEAM
G.R. TRANSITION

CONST.
GUARDRAIL

I-69 BRIDGE OVER
CSX RAILROAD
M.P. = 115.279

CONST. THRIE-BEAM
G.R. TRANSITION

MATCHLINE (SEE SHEET 4)

LEGEND

- BASE FAILURE REPAIR
- SHOULDER REPAIR AREA
- PROPOSED GUARDRAIL WORK
- REMOVE BROKEN PAVED DITCH
- PROP. PAVEMENT DIG OUT



SCALE: 1"=200'

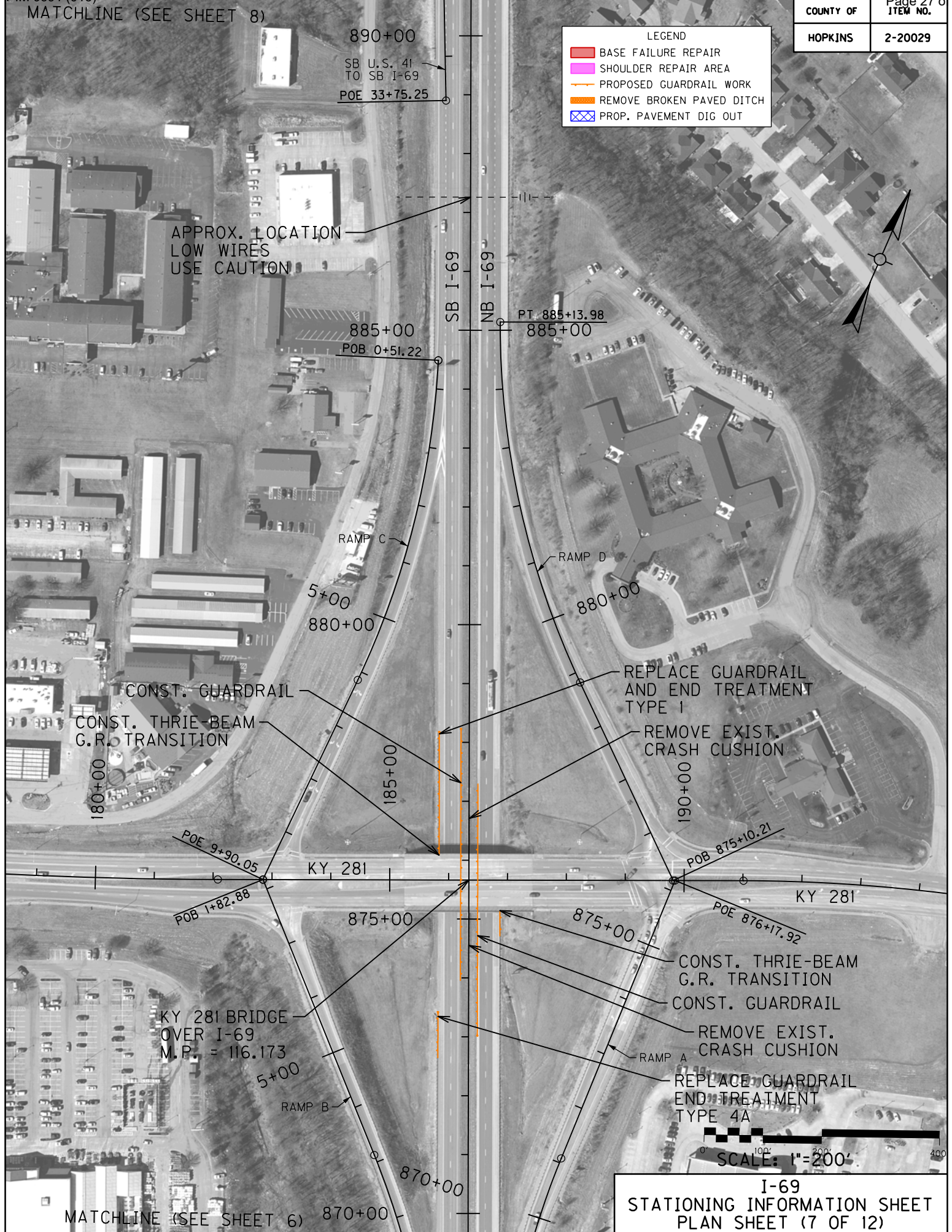
I-69
STATIONING INFORMATION SHEET
PLAN SHEET (5 OF 12)

MATCHLINE (SEE SHEET 8)

COUNTY OF	HOPKINS
ITEM NO.	2-20029

LEGEND

- BASE FAILURE REPAIR
- SHOULDER REPAIR AREA
- PROPOSED GUARDRAIL WORK
- REMOVE BROKEN PAVED DITCH
- PROP. PAVEMENT DIG OUT



APPROX. LOCATION
LOW WIRES
USE CAUTION

890+00

SB U.S. 41
TO SB I-69
POE 33+75.25

885+00

POB 0+51.22

PT. 885+13.98
885+00

RAMP C

RAMP D

5+00

880+00

880+00

CONST. GUARDRAIL

CONST. THRIE-BEAM
G.R. TRANSITION

REPLACE GUARDRAIL
AND END TREATMENT
TYPE I

REMOVE EXIST.
CRASH CUSHION

180+00

185+00

190+00

POE 9+90.05

KY 281

POB 875+10.21

KY 281

POB 1+82.88

875+00

875+00

POE 876+17.92

KY 281 BRIDGE
OVER I-69
M.P. = 116.173

5+00

RAMP B

RAMP A

CONST. THRIE-BEAM
G.R. TRANSITION

CONST. GUARDRAIL

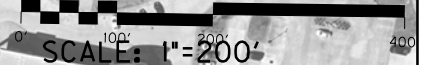
REMOVE EXIST.
CRASH CUSHION

REPLACE GUARDRAIL
END TREATMENT
TYPE 4A

870+00

MATCHLINE (SEE SHEET 6)

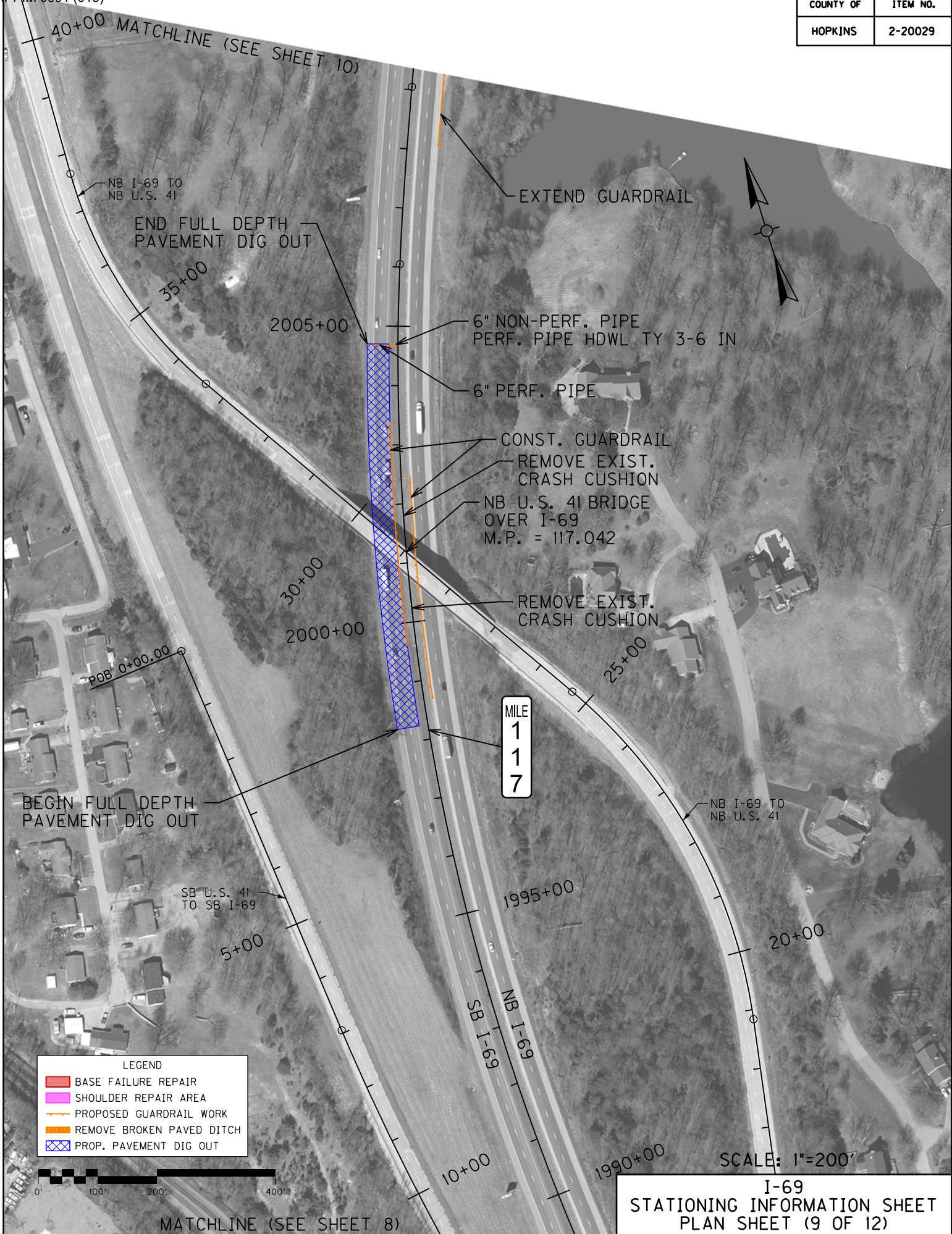
870+00



I-69

STATIONING INFORMATION SHEET
PLAN SHEET (7 OF 12)

COUNTY OF	ITEM NO.
HOPKINS	2-20029



LEGEND

	BASE FAILURE REPAIR
	SHOULDER REPAIR AREA
	PROPOSED GUARDRAIL WORK
	REMOVE BROKEN PAVED DITCH
	PROP. PAVEMENT DIG OUT



1
1
7

INDEX OF SHEETS

Sheet No.	Description
S1	GENERAL NOTES & ESTIMATE OF QUANTITIES
S2	KY TO LAYOUT
S3	CSX RR LAYOUT
S4	THREE-BEAM RETROFIT DETAILS

DAMAGE TO THE STRUCTURE

THE CONTRACTOR IS RESPONSIBLE FOR ANY AND ALL DAMAGE TO THE EXISTING STRUCTURE, INCLUDING THE LOWER PORTION OF THE STRUCTURE, DUE TO THE CONTRACTOR'S ACTIONS. THE CONTRACTOR IS RESPONSIBLE FOR BOTH THE REMOVAL AND REPLACEMENT OF THE FALLEN PORTION AT THE CONTRACTOR'S EXPENSE.

ABBREVIATIONS

CONN	CENTERLINE CONNECTION	EO	EQUAL SPACE
CLR	CLEAR	SPA	TYPICAL
EF	EACH FACE	TYP	
EMBED	EMBEDMENT		

SPECIFICATIONS

ALL REFERENCES TO THE STANDARD SPECIFICATIONS ARE TO THE 2019 EDITION OF THE KENTUCKY DEPARTMENT OF HIGHWAYS STANDARD SPECIFICATIONS FOR ROAD AND BRIDGE CONSTRUCTION WITH SUPPLEMENTAL SPECIFICATIONS.

ALL REFERENCES TO THE ASHTO SPECIFICATIONS ARE TO THE LRFD BRIDGE DESIGN SPECIFICATIONS, 9th EDITION.

MATERIALS DESIGN SPECIFICATIONS

FOR CLASS "A" REINFORCED CONCRETE
F'C = 4000 psi
F_y = 60000 psi

REINFORCEMENT

DIMENSIONS SHOWN FROM THE FACE OF CONCRETE TO BARS ARE TO CENTER OF BAR UNLESS OTHERWISE SHOWN. CLEAR DISTANCE TO THE FACE OF CONCRETE IS 2" UNLESS NOTED OTHERWISE. SPACING OF BARS IS FROM CENTER TO CENTER OF BARS.

DRILLING AND ANCHORING INTO EXISTING CONCRETE

FOR ANCHORING NEW REINFORCING STEEL INTO EXISTING CONCRETE, SEE SECTIONS 511 AND 602.03.04 OF THE STANDARD SPECIFICATIONS. AVOID DRILLING THROUGH COLUMN REINFORCEMENT (VERTICAL AND HOOP). IF REINFORCEMENT CAN NOT BE LOCATED PRIOR TO DRILLING AND IS HIT, STOP DRILLING IMMEDIATELY. SHIFT DRILL TEMPLATE LOCATION AND RE-DRILL. THE COST OF THIS WORK, INCLUDING LABOR, TOOLS, AND MATERIALS IS TO BE INCIDENTAL TO THE UNIT BID PRICE FOR STEEL REINFORCEMENT - EPOXY COATED.

BONDING NEW CONCRETE TO EXISTING CONCRETE

IMMEDIATELY PRIOR TO PLACING NEW CLASS "AA" CONCRETE, THE SURFACE AREAS OF EXISTING CONCRETE ARE TO BE COATED WITH A TWO-COMPONENT EPOXY RESIN SYSTEM IN ACCORDANCE WITH SECTIONS 511 AND 826 OF THE STANDARD SPECIFICATIONS. THE COST OF THIS WORK, INCLUDING LABOR, TOOLS, AND MATERIALS IS TO BE INCIDENTAL TO THE UNIT BID PRICE FOR CLASS "AA" CONCRETE.

CONCRETE SEALING

CONTRARY TO THE SPECIFICATIONS, DO NOT APPLY MASONRY COATING. INSTEAD APPLY CONCRETE SEALER IN ACCORDANCE WITH THE SPECIAL NOTE FOR CONCRETE SEALING.

BEVELED EDGES

ALL EXPOSED EDGES SHALL BE BEVELED $\frac{3}{4}$ " UNLESS OTHERWISE SHOWN.

TRAFFIC CONTROL

THE CONTRACTOR SHALL BE RESPONSIBLE FOR ERECTING AND MAINTAINING PROPER BARRICADES AND ADVANCE WARNING SIGNALS FOR ROAD CONSTRUCTION AND ROAD CLOSURE.

UTILITIES

BEFORE BEGINNING WORK, LOCATE ALL EXISTING UTILITIES. CONSIDER LOCATION OF ANY UTILITIES SHOWN ON THE EXISTING OR CONTRACT DRAWINGS TO BE APPROXIMATE AND FOR INFORMATIONAL PURPOSES ONLY. THE DEPARTMENT DOES NOT WARRANT THE LOCATIONS AND ASSUMES NO RESPONSIBILITY FOR THE ACCURACY OR COMPLETENESS. THE CONTRACTOR MUST MAKE HIS OWN DETERMINATION. EXCEPT AS SHOWN ON THE PLANS, WORK AROUND AND DO NOT DISTURB EXISTING UTILITIES.

REMOVE EXISTING STRUCTURE

THE EXISTING BARRIER IS TO BE REMOVED AS SHOWN IN THE PLANS. THE COST OF THIS WORK SHALL BE INCLUDED IN THE UNIT BID PRICE FOR REMOVE CONCRETE MASONRY.

PLANS OF EXISTING STRUCTURE

AS AN AID TO THE CONTRACTOR, PLANS OF THE EXISTING BRIDGES ARE AVAILABLE (SEE DRAWING NUMBER 1462, 2485, 1468 AND 24344). THE COMPLETENESS AND ACCURACY OF THE DRAWINGS IS NOT GUARANTEED.

VERIFYING FIELD CONDITIONS

THE CONTRACTOR SHALL VERIFY ALL DIMENSIONS BEFORE ORDERING MATERIAL. NEW MATERIAL REPLACES UNSUITABLE EXISTING MATERIALS IN THE EXISTING STRUCTURE SHALL BE REPLACED AT THE CONTRACTOR'S EXPENSE.

ESTIMATE OF QUANTITIES

BID CODE	ITEM	QUANTITY	UNIT
2403	REMOVE CONCRETE MASONRY	6.4	CY
8104	CONCRETE CLASS "AA"	8.3	CY
8151	STEEL REINFORCEMENT - EPOXY COATED	1,004	LB
23378C	CONCRETE SEALING	377	SF
25078D	THREE BEAM GUARDRAIL TRANSITION TL-3	8	EA

SPECIAL NOTES

CONCRETE SEALING

SPECIAL PROVISIONS

NA

STANDARD DRAWINGS

BHS-014 THREE-BEAM GUARDRAIL TRANSITION (TL-3)
RBR-015-06 STEEL GUARDRAIL POST

SPECIFICATIONS

2019 Standard Specifications for Road and Bridge Construction
2020 (9th Edition) ASHTO LRFD Bridge Design Specifications

REVISION	DATE	CHECKED BY
	JUNE 2024	M. LAWLER
		C. ELLISON

DESIGNED BY: C. ELLISON
DETAILED BY: S. FOY

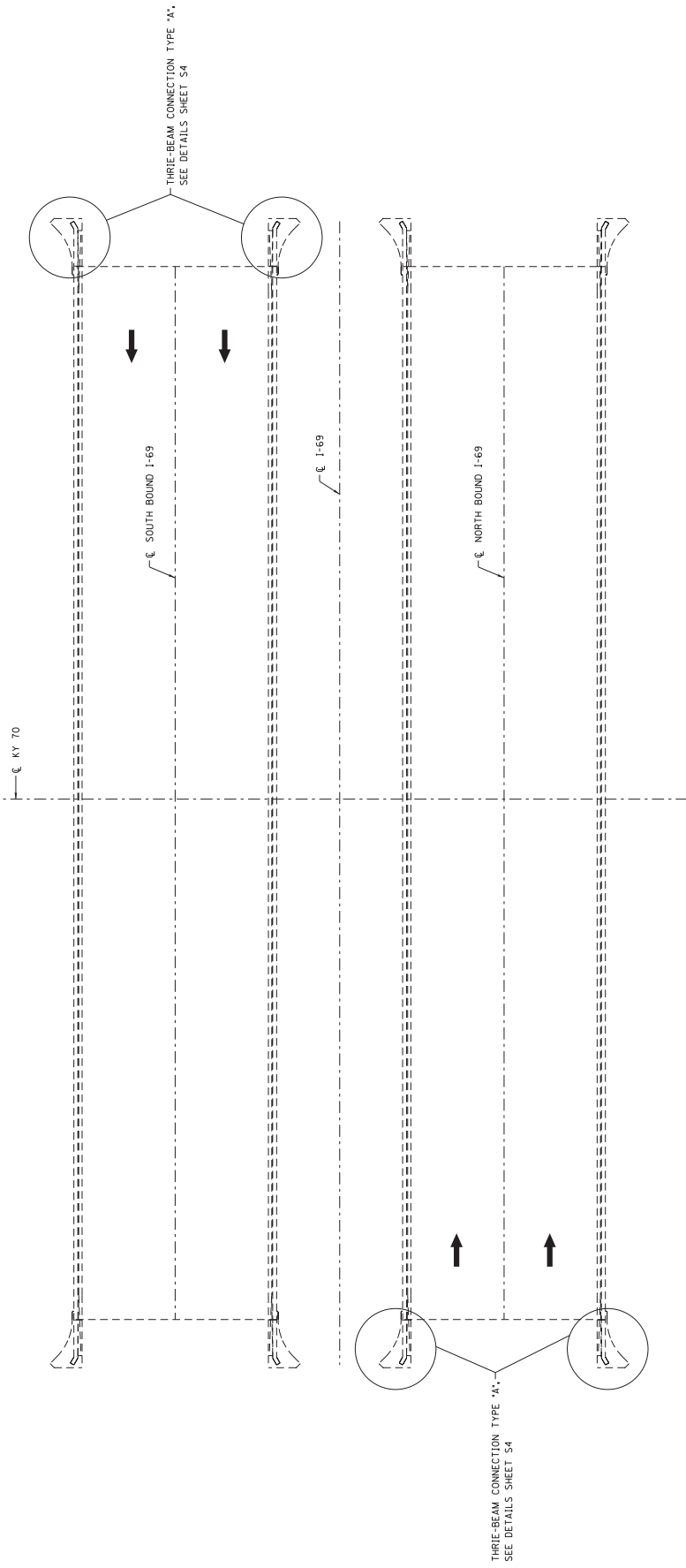
COMMONWEALTH OF KENTUCKY
DEPARTMENT OF HIGHWAYS

HOPKINS
ROUTE 1-69
KY 70 & CSX RR

GENERAL NOTES & EST QUANTITIES
PREPARED BY: Stantec

ITEM NUMBER
2-20029

HOPKINS COUNTY
 NHPPIM 0691 (013)



PLAN

REVISION	DATE	CHECKED BY

DATE: JUNE 2024
 DESIGNED BY: C. ELLISON
 CHECKED BY: M. LAWLER
 DETAILED BY: S. FOY
 C. ELLISON

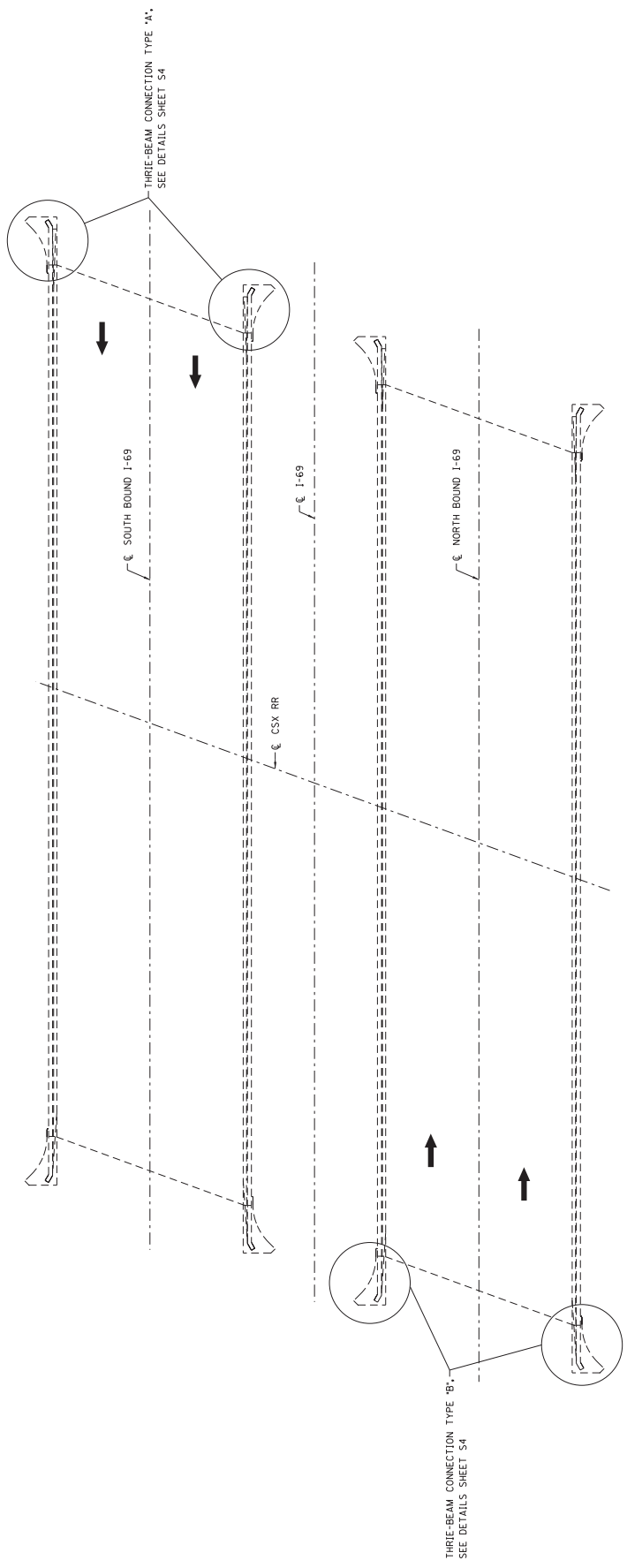
Commonwealth of Kentucky
 DEPARTMENT OF HIGHWAYS

ROUTE I-69
 CROSSING KY 70

HOPKINS
 PREPARED BY

ITEM NUMBER
 2-20029

Stantec

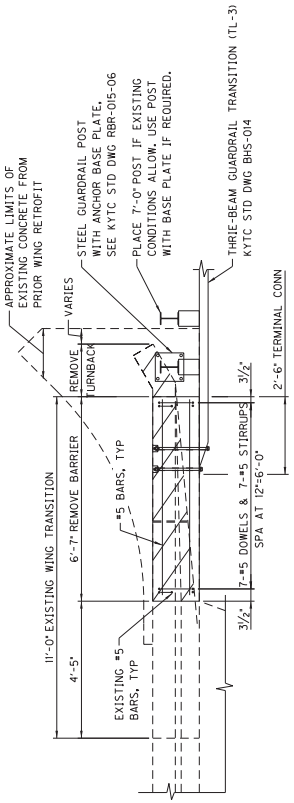


PLAN

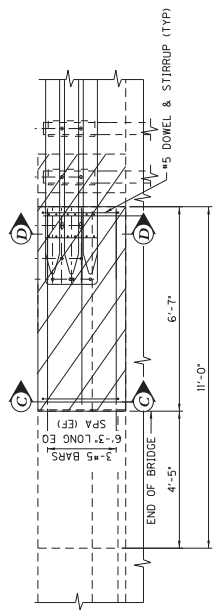
REVISION	DATE
DESIGNED BY: C. ELLISON	CHECKED BY: M. LAWLER
DETAILED BY: S. FOY	C. ELLISON
Commonwealth of Kentucky DEPARTMENT OF HIGHWAYS	
COUNTY OF HOPKINS	
ROUTE I-69	CROSSING CSX RR
PREPARED BY CSX RR LAYOUT	

SHEET NO. 32C
 OF 32C
 DRAWING

ITEM NUMBER
 2-20029



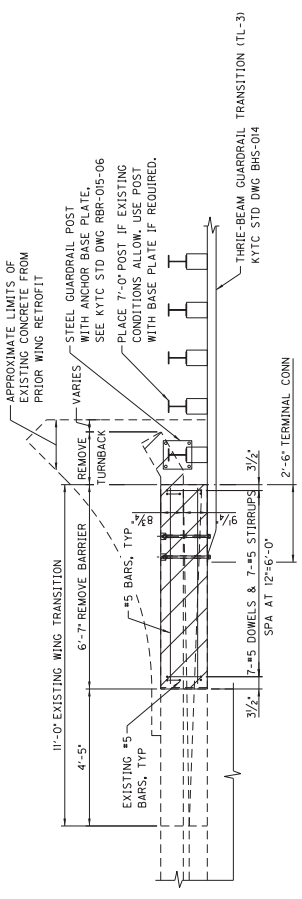
PLAN



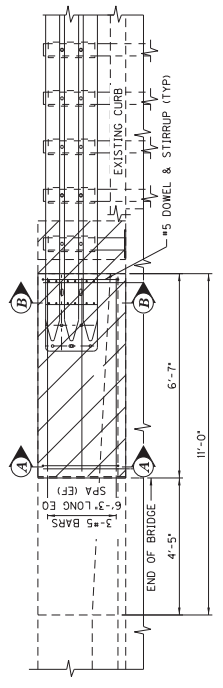
ELEVATION
TYPE B

LIMITS OF REMOVAL, CLEAN AND INCORPORATE EXISTING REINFORCING INTO NEW CONSTRUCTION

NOTE:
PROPOSED REINFORCEMENT SHALL BE EPOXY COATED.
IF EXISTING REINFORCING CAN NOT BE INCORPORATED INTO NEW CONSTRUCTION, DRILL AND GROUT 3"-6" LONG #5 DOWELS AT 12" ALONG EACH FACE OF THE BARRIER.



PLAN

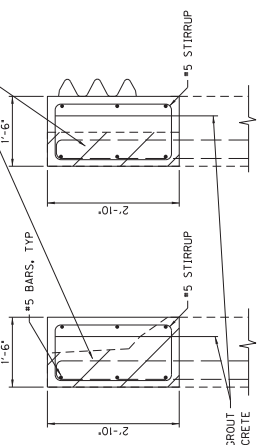


ELEVATION
TYPE A

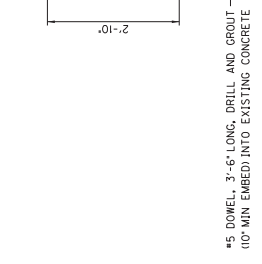
LIMITS OF REMOVAL, CLEAN AND INCORPORATE EXISTING REINFORCING INTO NEW CONSTRUCTION

NOTE:
PROPOSED REINFORCEMENT SHALL BE EPOXY COATED.
IF EXISTING REINFORCING CAN NOT BE INCORPORATED INTO NEW CONSTRUCTION, DRILL AND GROUT 3"-6" LONG #5 DOWELS AT 12" ALONG EACH FACE OF THE BARRIER.

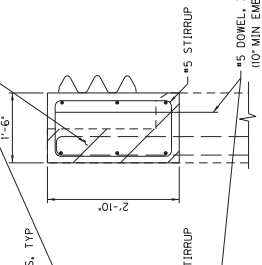
SECTION D-D



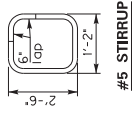
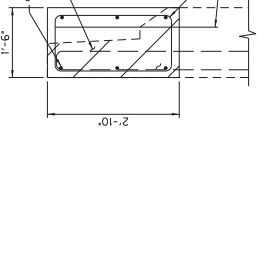
SECTION C-C



SECTION B-B



SECTION A-A



#5 STIRRUP

DATE	REVISION	CHECKED BY
JUNE 2024		M. LAWLER
DESIGNED BY: C. ELLISON		C. ELLISON
DETAILED BY: S. FOY		
Commonwealth of Kentucky DEPARTMENT OF HIGHWAYS		
HOPKINS COUNTY		
ROUTE	PROJECT NO.	
I-69	THREE-BEAM RETROFIT DETAILS	
PREPARED BY		
Stantec		

ITEM NUMBER
2-20029

Sheet No.	Description
S1	GENERAL NOTES & ESTIMATE OF QUANTITIES
S2	PIER CRASHWALL ADDITION

Sheet No.	Description
S1	GENERAL NOTES & ESTIMATE OF QUANTITIES
S2	PIER CRASHWALL ADDITION

INDEX OF SHEETS

DAMAGE TO THE STRUCTURE

THE CONTRACTOR IS RESPONSIBLE FOR ANY AND ALL DAMAGE TO THE EXISTING STRUCTURE, INCLUDING BUT NOT LIMITED TO, THE CONTRACTOR'S ACTIONS AND REACTIONS. THE CONTRACTOR IS RESPONSIBLE FOR BOTH THE REMOVAL AND REPLACEMENT OF THE FALLEN PORTION AT THE CONTRACTOR'S EXPENSE.

ABBREVIATIONS

CC	CENTERLINE	EQ	EQUAL	TYP	TYPICAL
COL	COLUMN	MIN	MINIMUM	UNO	UNLESS
CLR	CLEAR	MAX	MAXIMUM	VAR	VARIABLES
EF	EACH FACE	PROJ	PROJECTION		
EMBED	EMBEDMENT	SPA	SPACE		
				UNLESS NOTED OTHERWISE	VARIABLES

ESTIMATE OF QUANTITIES

BID CODE	ITEM	QUANTITY	UNIT
2403	REMOVE CONCRETE MASONRY	38.2	CY
8100	CONCRETE CLASS 'A'	111.3	CY
8150	STEEL REINFORCEMENT	14,193	LB
23378EC	CONCRETE SEALING	2,944	SF
25078ED	THREE BEAM GUARDRAIL TRANSITION TL-3	2	EA

SPECIFICATIONS

ALL REFERENCES TO THE STANDARD SPECIFICATIONS ARE TO THE 2019 EDITION OF THE KENTUCKY DEPARTMENT OF HIGHWAYS STANDARD SPECIFICATIONS FOR ROAD AND BRIDGE CONSTRUCTION WITH SUPPLEMENTAL SPECIFICATIONS.
ALL REFERENCES TO THE ASHTO SPECIFICATIONS ARE TO THE LRFD BRIDGE DESIGN SPECIFICATIONS, 9th EDITION.

DESIGN LOAD

THE COLUMNS AND CRASH WALL ARE DESIGNED FOR 600 KIP COLLISION FORCE.

DESIGN METHOD

ALL REINFORCED CONCRETE MEMBERS ARE DESIGNED BY THE LOAD AND RESISTANCE FACTOR METHOD AS SPECIFIED IN THE CURRENT AASHTO SPECIFICATIONS.

MATERIALS DESIGN SPECIFICATIONS

FOR CLASS 'A' REINFORCED CONCRETE
F'C = 3500 psi
FY = 60000 psi

REINFORCEMENT

DIMENSIONS SHOWN FROM THE FACE OF CONCRETE TO BARS ARE TO CENTER OF BAR UNLESS OTHERWISE SHOWN. CLEAR DISTANCE TO THE FACE OF CONCRETE IS '2' UNLESS NOTED OTHERWISE. SPACING OF BARS IS FROM CENTER TO CENTER OF BARS.

DRILLING AND ANCHORING INTO EXISTING CONCRETE

FOR ANCHORING NEW REINFORCING STEEL INTO EXISTING CONCRETE, SEE SECTIONS 511 AND 602.03.04 OF THE STANDARD SPECIFICATIONS. AVOID DRILLING THROUGH COLUMN REINFORCEMENT (VERTICAL AND HOOP). IF REINFORCEMENT CAN NOT BE LOCATED PRIOR TO DRILLING AND IS HIT, STOP DRILLING IMMEDIATELY, SHIFT DRILL TEMPLATE LOCATION AND RE-DRILL. THE COST OF THIS WORK, INCLUDING LABOR, TOOLS, AND MATERIALS IS TO BE INCIDENTAL TO THE UNIT BID PRICE FOR STEEL REINFORCEMENT.

BONDING NEW CONCRETE TO EXISTING CONCRETE

IMMEDIATELY PRIOR TO PLACING NEW CLASS 'A' CONCRETE, THE SURFACE AREAS OF EXISTING CONCRETE ARE TO BE COATED WITH A TWO-COMPONENT EPOXY RESIN SYSTEM IN ACCORDANCE WITH SECTIONS 511 AND 826 OF THE STANDARD SPECIFICATIONS. THE COST OF THIS WORK, INCLUDING LABOR, TOOLS, AND MATERIALS IS TO BE INCIDENTAL TO THE UNIT BID PRICE FOR CLASS 'A' CONCRETE.

CONCRETE SEALING

CONTRARY TO THE SPECIFICATIONS, DO NOT APPLY MASONRY COATING. INSTEAD APPLY CONCRETE SEALER IN ACCORDANCE WITH THE SPECIAL NOTE FOR CONCRETE SEALING.

BEVELED EDGES

ALL EXPOSED EDGES SHALL BE BEVELED $\frac{3}{8}$ " UNLESS OTHERWISE SHOWN.

TRAFFIC CONTROL

THE CONTRACTOR SHALL BE RESPONSIBLE FOR ERECTING AND MAINTAINING PROPER BARRICADES AND ADVANCE WARNING SIGNALS FOR ROAD CONSTRUCTION AND ROAD CLOSURE.

UTILITIES

BEFORE BEGINNING WORK, LOCATE ALL EXISTING UTILITIES. CONSIDER LOCATION OF ANY UTILITIES SHOWN ON THE EXISTING OR CONTRACT DRAWINGS TO BE APPROXIMATE AND FOR INFORMATIONAL PURPOSES ONLY. THE DEPARTMENT DOES NOT WARRANT THE LOCATIONS AND DEPTHS OF UTILITIES SHOWN ON THE EXISTING OR CONTRACT DRAWINGS. THE CONTRACTOR ASSUMES NO RESPONSIBILITY FOR THE ACCURACY OR COMPLETENESS. THE CONTRACTOR SHALL BE RESPONSIBLE FOR THE ACCURACY OF ALL UTILITIES SHOWN ON THE PLANS, WORK AROUND AND DO NOT DISTURB EXISTING UTILITIES.

REMOVE EXISTING STRUCTURE

THE EXISTING BARRIER IS TO BE REMOVED AS SHOWN IN THE PLANS. THE COST OF THIS WORK SHALL BE INCLUDED IN THE UNIT BID PRICE FOR REMOVE CONCRETE MASONRY.

PLANS OF EXISTING STRUCTURE

AS AN AID TO THE CONTRACTOR, PLANS OF THE EXISTING BRIDGES ARE AVAILABLE (SEE DRAWING NUMBER 4170 AND 24676). THE COMPLETENESS AND ACCURACY OF THE DRAWINGS IS NOT GUARANTEED.

VERIFYING FIELD CONDITIONS

THE CONTRACTOR SHALL VERIFY ALL DIMENSIONS BEFORE ORDERING MATERIAL. NEW MATERIAL THAT IS UNSUITABLE BECAUSE OF VARIATIONS IN THE EXISTING STRUCTURE SHALL BE REPLACED AT THE CONTRACTOR'S EXPENSE.

FILE NAME: \\S02435-PF5501\SHARED_PROJECTS\178579074\STRUCTURE\0\DRM\INVS\SHEETS\51\CRASHWALL_GEN NOTES.DGN	DATE PLOTTED: 6/14/2024 1:00:50 PM	USER: erimble	E-SHEET NAME: 18.19.916
CONSTRUCTION PROJECT NO.	LETTING DATE		

SPECIFICATIONS

2019 Standard Specifications for Road and Bridge Construction
2020 (9th Edition) AASHTO LRFD Bridge Design Specifications

REVISION	DATE	CHECKED BY
	JUNE 2024	J. MURPHY
		C. ELLISON

DESIGNED BY: C. ELLISON
DETAILED BY: E. TRIMBLE

COMMUNICABILITY OF KENTUCKY
DEPARTMENT OF HIGHWAYS

HOPKINS
ROUTE KY 281 CROSSING I-69

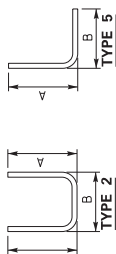
GENERAL NOTES & EST QUANTITIES
PREPARED BY: Stantec



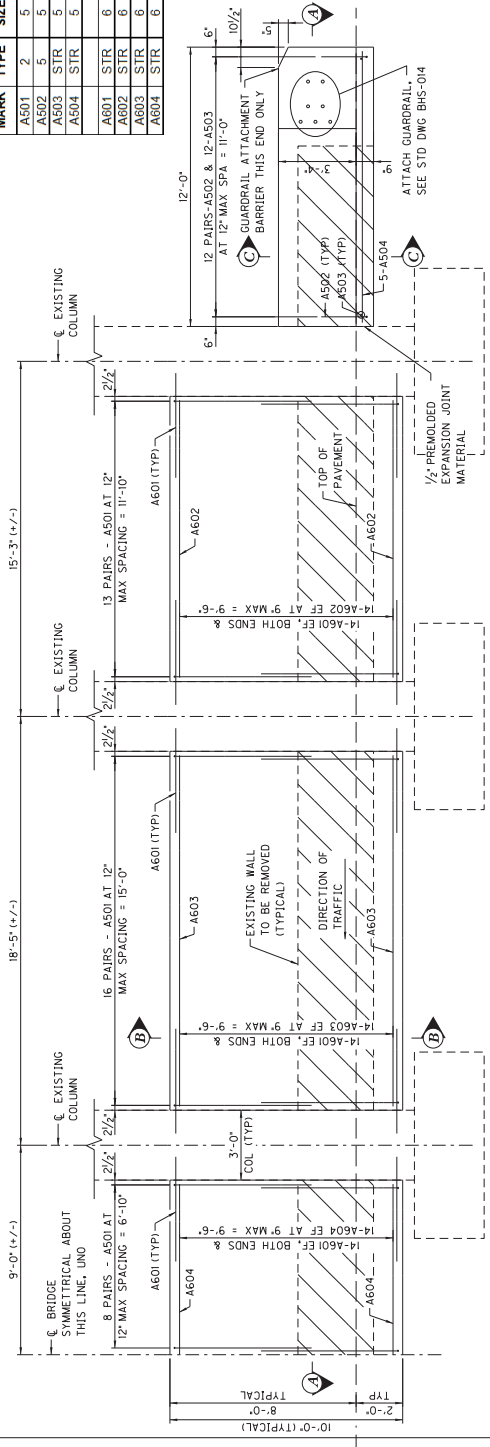
ITEM NUMBER
2-20029

BILL OF REINFORCEMENT

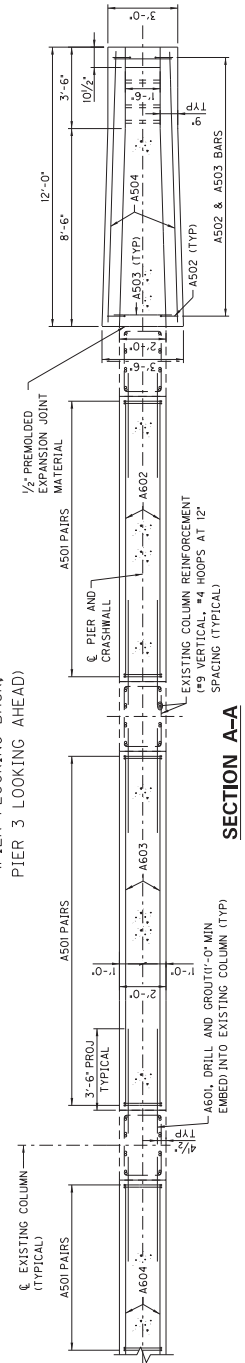
MARK	TYPE	SIZE	NO.	LENGTH		LOCATION		A		B		C	
				FT	IN	IN	FT	IN	FT	IN	FT	IN	FT
A501	2	5	296	13	6	WALL	5	11	1	8			
A502	5	5	48	2	9	WALL	2	0	0	9			
A503	STR	5	24	2	8	WALL							
A504	STR	5	10	11	6	WALL							
A601	STR	6	560	4	6	WALL/COLUMN							
A602	STR	6	112	12	3	WALL							
A603	STR	6	112	15	5	WALL							
A604	STR	6	56	15	0	WALL							



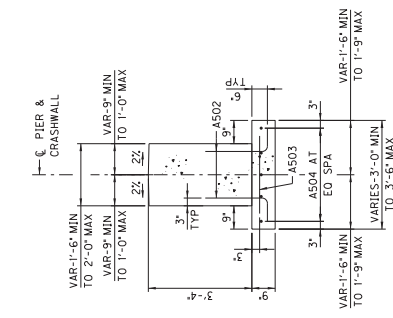
NOTE:
FIELD CUT A602, A603 AND A604
AS REQUIRED TO FIT.



PART ELEVATION - PIERS 1 & 3
(PIER 1 LOOKING BACK,
PIER 3 LOOKING AHEAD)



SECTION A-A



SECTION C-C



SECTION B-B



ITEM NUMBER
2-20029

DATE	REVISION	CHECKED BY
JUNE 2024		J. MURPHY
DESIGNED BY: C. ELLISON		C. ELLISON
DETAILED BY: E. TRIMBLE		
Commonwealth of Kentucky DEPARTMENT OF HIGHWAYS		
ROUTE KY 281		
PIER CRASHWALL ADDITION		
CROSSING I-69		
PREPARED BY HOPKINS		
SHEET NO. 29		

**I-69 PAVEMENT REHABILITATION
HOPKINS COUNTY
SB I-69 MILEPOST 113.81 TO 118.15
NB I-69 MILEPOST 114.24 TO 118.15
ITEM NUMBER: 2-20029
GENERAL SUMMARY**

ITEM NUMBER	ITEM		QUANTITY	UNIT
1	DGA BASE	(1)	2,500	TON
71	CRUSHED AGGREGATE SIZE NO 57	(10)	4	TON
78	CRUSHED AGGREGATE SIZE NO 2	(11)	2,624	TON
100	ASPHALT SEAL AGGREGATE	(2)	398	TON
103	ASPHALT SEAL COAT	(2)	48	TON
194	LEVELING AND WEDGING PG76-22	(7)	1,000	TON
217	CL4 ASPH BASE 1.00D PG64-22		1,604	TON
219	CL4 ASPH BASE 1.00D PG76-22		25,640	TON
335	CL4 ASPH SURF 0.50A PG76-22		14,814	TON
1001	PERFORATED PIPE-6 IN	(10)	37	LF
1011	NON-PERFORATED PIPE-6 IN	(10)	8	LF
1029	PERF PIPE HEADWALL TY 3-6 IN	(10)	1	EACH
1982	DELINEATOR FOR GUARDRAIL MONO DIRECTIONAL WHITE		15	EACH
1983	DELINEATOR FOR GUARDRAIL MONO DIRECTIONAL YELLOW		19	EACH
2003	RELOCATE TEMP CONC BARRIER		1,035	LF
2165	REMOVE PAVED DITCH		425	SQYD
2200	ROADWAY EXCAVATION	(9) (12)	3,729	CUYD
2367	GUARDRAIL END TREATMENT TYPE 1		9	EACH
2369	GUARDRAIL END TREATMENT TYPE 2A		6	EACH
2381	REMOVE GUARDRAIL		937.5	LF
2383	REMOVE & RESET GUARDRAIL		50	LF
2387	GUARDRAIL CONNECTOR TO BRIDGE END TY A-1		2	EACH
2403	REMOVE CONCRETE MASONRY		44.6	CY
2483	CHANNEL LINING CLASS II	(3)	253	TON
2562	TEMPORARY SIGNS		3,500	SF
2568	MOBILIZATION		1	LS
2569	DEMOBILIZATION		1	LS
2604	FABRIC-GEOTEXTILE CLASS 1A		8,887	SQYD
2650	MAINTAIN & CONTROL TRAFFIC		1	LS
2654	TRUCK MOUNTED ATTENUATOR		2	EACH
2671	PORTABLE CHANGEABLE MESSAGE SIGN		6	EACH
2676	MOBILIZATION FOR MILL & TEXT		1	LS
2677	ASPHALT PAVE MILLING & TEXTURING		28,949	TON
2704	SILT TRAP TYPE B	(4)	10	EACH
2705	SILT TRAP TYPE C	(4)	5	EACH
2707	CLEAN SILT TRAP TYPE B	(4)	10	EACH
2708	CLEAN SILT TRAP TYPE C	(4)	5	EACH
2775	ARROW PANEL		4	EACH
2898	RELOCATE CRASH CUSHION	(8)	1	EACH
3171	CONCRETE BARRIER WALL TYPE 9T		1,035	LF
3240	BASE FAILURE REPAIR		130	SQYD
5950	EROSION CONTROL BLANKET	(4)	500	SQYD
6401	FLEXIBLE DELINEATOR POST-M/W		639	EACH
6404	FLEXIBLE DELINEATOR POST-M/Y		120	EACH
6511	PAVE STRIPING-TEMP PAINT - 6 IN		348,480	LF
6542	PAVE STRIPING THERMO - 6 IN W		61,828	LF
6543	PAVE STRIPING THERMO - 6 IN Y		48,938	LF
6546	PAVE STRIPING-THERMO - 12 IN W		3,642	LF
6549	PAVE STRIPING-TEMP REM TAPE-B	(13)	7,560	LF
6550	PAVE STRIPING-TEMP REM TAPE-W	(13)	6,720	LF
6551	PAVE STRIPING-TEMP REM TAPE-Y	(13)	6,720	LF
6556	PAVE STRIPING-DUR TY 1-6 IN W	(5)	873	LF
6557	PAVE STRIPING-DUR TY 1-6 IN Y	(5)	698	LF
6565	PAVE MARKING-THERMO X-WALK-6 IN		397	LF
6568	PAVE MARK THERMO STOP BAR-24 IN		48	LF
6574	PAVE MARKING-THERMO CURV ARROW		16	EACH

**I-69 PAVEMENT REHABILITATION
HOPKINS COUNTY
SB I-69 MILEPOST 113.81 TO 118.15
NB I-69 MILEPOST 114.24 TO 118.15
ITEM NUMBER: 2-20029
GENERAL SUMMARY**

ITEM NUMBER	ITEM		QUANTITY	UNIT
6613	INLAID PAVEMENT MARKERS-B W/R		733	EACH
6614	INLAID PAVEMENT MARKERS-B Y/R		76	EACH
8100	CONCRETE CLASS A		111.3	CY
8104	CONCRETE CLASS AA		8.3	CY
8150	STEEL REINFORCEMENT		14,193	LB
8151	STEEL REINFORCEMENT-EPOXY COATED		1,004	LB
8903	CRASH CUSHION TY VI CLASS BT TL3	(8)	1	EACH
10020NS	FUEL ADJUSTMENT		66,119	DOLL
10030NS	ASPHALT ADJUSTMENT		166,072	DOLL
20071EC	JOINT ADHESIVE		87,120	LF
20191ED	OBJECT MARKER TYPE 3	(6)	9	EACH
22664EN	WATER BLASTING EXISTING STRIPE		87,120	LF
20362ES403	SHOULDER RUMBLE STRIPS-SAWED		94,784	LF
20411ED	LAW ENFORCEMENT OFFICER		250	HOURL
204322ES112	REMOVE CRASH CUSHION		4	EACH
21802EN	GUARDRAIL-STEEL W BEAM-S FACE (7 FT POST)		1,987.5	LF
23378EC	CONCRETE SEALING		3,321	SF
24679ED	PAVE MARK THERMO CHEVRON		2,019	SF
24683ED	PAVE MARKING-THERMO DOTTED LANE EXTEN		923	LF
24785EC	FIBER REINFORCEMENT FOR HMA		38,971	TON
24880EC	REMOVE PAVEMENT MARKER		809	EACH
24891EC	PAVE MOUNT INFRARED TEMP EQUIPMENT		2,889,801	SF
24970EC	ASPHALT MATERIAL FOR TACK NON-TRACKING		112	TON
25075EC	QUEUE PROTECTION VEHICLE		960	HOURL
25078ED	THRIE-BEAM GUARDRAIL TRANSITION (TL-3)		10	EACH
25117EC	FURNISH QUEUE PROTECTION VEHICLES		4	MONTH
26136EC	PORTABLE QUEUE WARNING ALERT SYSTEM		7	MONTH
26137EC	QUEUE WARNING PCMS		42	MONTH
26138EC	QUEUE WARNING PORTABLE RADAR SENSORS		42	MONTH
26228EC	ELECTRONIC DELIVERY MGMT SYSTEM		1	LS

- NOTE: Quantities from all roadway summary sheets have been carried over and included in this General Summary
- (1) Includes 1548 tons from the Paving Summary, 435 tons from the Guardrail Summary, and 72 tons from the drainage summary with the remainder to be used as directed by the Engineer.
 - (2) Quantity is included for the inside shoulders, areas where guardrail is being constructed or removed and reset, and the pavement dig out area.
 - (3) Any excavation and Fabric-Geotextile Class 2 required to place the channel lining is incidental to the lining.
 - (4) To be used as directed by the Engineer for slope and ditch repairs.
 - (5) For permanent striping on bridges
 - (6) For use on guardrail end treatment type 1.
 - (7) To be used as directed by the Engineer for cross slope corrections and pavement repairs during construction.
 - (8) For Concrete Barrier Wall Type 9T.
 - (9) Roadway Excavation will be paid for by plan quantity.
 - (10) To be used as directed by the Engineer in the pavement digout area.
 - (11) Includes 2623 tons from the paving summary and 1 ton for the perforated pipe headwall.
 - (12) Includes 3727 CUYD from the paving summary and 2 CUYD for the perforated pipe trench at the low end of the digout area.
 - (13) To be used for maintenance of traffic tapers on existing pavement outside the project limits.

Location	SIDE	BEGIN MP (2)	END MP (2)	DGA (1)	DELINERS FOR GUARDRAIL MONO DIRECTIONAL WHITE	DELINERS FOR GUARDRAIL MONO DIRECTIONAL YELLOW	GUARDRAIL - STEEL W/ BEAM S- FACE (FT POST)	REMOVE GUARDRAIL (*)		END TREATMENT TYPE 1	END TREATMENT TYPE 2A	REMOVE & RESET GUARDRAIL	CONNECTOR TO BRIDGE END TY A-1	OBJECT MARKER TY 3	REMOVE CRASH CUSHION	THREE-BEAM GUARDRAIL TRANSITION (TL-3) (3)	COMMENTS	
								LF	LF									
Units				TON	EACH	EACH	LF	LF	EACH	EACH	LF	EACH	EACH	EACH	EACH			
Item Number				1	1982	1983	21802EN	2381	2367	2369	2383	20191ED	2387	20432ES112	25078ED			
NORTHBOUND I-69																		
NB	OUTSIDE	114.25	114.26	1	1	1	25	50	1						1			
NB	MEDIAN	114.25	114.26	1	1	1	25	50							1		TO BE INSTALLED ON THE INSIDE SHOULDER AT THE BRIDGE END	
NB	OUTSIDE	115.26	115.27	1	1	1	25	50							1			
NB	MEDIAN	115.26	115.27	1	1	1	25	50							1			
NB	OUTSIDE	116.13	116.21	1	1	1	25	375	1						1		TO BE INSTALLED ON THE INSIDE SHOULDER AT THE BRIDGE END	
NB	MEDIAN	116.13	116.21	1	1	1	375								1		NEW GUARDRAIL AT INSIDE SHOULDER PAVEMENT EDGE	
NB	OUTSIDE	116.16	116.17	1	1	1	25	50							1			
NB	MEDIAN	116.20	116.20	1	1	1	25	50							1		NEW GUARDRAIL AT INSIDE SHOULDER PAVEMENT EDGE	
NB	OUTSIDE	117.01	117.08	1	1	1	325		1						1			
NB	MEDIAN	117.01	117.08	1	1	1	325								1			
NB	OUTSIDE	117.07	117.07	1	1	1									1			
NB	OUTSIDE	117.19	117.22	87	3	1	125	50	1						1		REMOVE EXIST. END TREATMENT AND EXTEND GUARDRAIL	
SOUTHBOUND I-69																		
SB	OUTSIDE	114.29	114.30	1	1	1	25	50							1			
SB	MEDIAN	114.29	114.30	1	1	1	25	50							1			
SB	OUTSIDE	115.31	115.32	1	1	1	25	50							1			
SB	MEDIAN	115.31	115.32	1	1	1	25	50							1			
SB	OUTSIDE	116.12	116.13	87	1	1	25	75	1						1		REPLACE EXIST. END TREATMENT TYPE 4A	
SB	MEDIAN	116.14	116.22	87	1	1	375								1		NEW GUARDRAIL AT INSIDE SHOULDER PAVEMENT EDGE	
SB	OUTSIDE	116.18	116.22	87	3	1	112.5	212.5	1						1		REPLACE EXIST. GUARDRAIL AND END TREATMENT	
SB	MEDIAN	117.03	117.10	87	3	1	325		1						1		NEW GUARDRAIL AT INSIDE SHOULDER PAVEMENT EDGE	
KY 70 TO SB I-69 (RAMP A)																		
RAMP A	LT	2+77	3+51	87	1	1	25	75	1						1		REPLACE EXIST. END TREATMENT TYPE 4A	
KY 70 TO NB I-69 (RAMP D)																		
RAMP D	RT	3+98	4+74	87	1	1	25	75	1						1		REPLACE EXIST. END TREATMENT TYPE 4A	
NB I-69 TO NB U.S. 41																		
NB U.S. 41	RT	13+06	13+56	435	15	19	1987.5	937.5	9						2	9	4	10
PROJECT TOTAL				435	15	19	1987.5	937.5	9						2	9	4	10

Note (*) Quantity includes removal of guardrail with end treatments
 (1) For Shoulder Improvements at Guardrail End Treatments and shoulder drop offs.
 (2) Begin and End locations for Ramp guardrail are shown using ramp stations instead of mileposts. See plan sheets for stationing.
 (3) To be installed on the I-69 Northbound and Southbound approach ends of the bridges over KY 70 and CSX RAILROAD and the I-69 Northbound and Southbound outside shoulder walls at the KY 281 overpass. See current Standard Drawings RBR-018 and BHS-014 for details.

REFERENCES

1. Kentucky Transportation Cabinet, Department of Highways, Standard Specifications for Road and Bridge Construction, Current Edition.
2. FHWA Manual on Uniform Traffic Control Devices (MUTCD), latest edition.
3. Active Sepia List

<u>Drawing No.</u>	<u>Drawing Name</u>
006	Inlaid Pavement Marker Arrangements Multi-Lane Roadways
007	Inlaid Pavement Marker Arrangements Multi-Lane Roadways
011	Inlaid Pavement Marker Arrangement Exit Gore and Off Ramp
013	Inlaid Pavement Marker Arrangement On-Ramp With Tapered Acceleration Lane
014	Inlaid Pavement Marker Arrangement On-Ramp With Parallel Acceleration Lane
025	Silt Trap Type C
028	Edgeline Rumble Strip Placement Details
4. Kentucky Department of Highways Standard Drawings, current editions, as applicable:

RBB-002	Guardrail and Bridge End Drainage for Twin Structures
RBB-003	Layout of Guardrail at Twin Structures (Depressed Median)
RBB-010	Guardrail Transition from Normal Shoulder to Narrow Bridge
RBC-002	Guardrail Connector to Bridge End Type A Components
RBC-003	Guardrail Connector to Bridge End Type A and A-1 Components
RBC-005	Guardrail Connector to Bridge End Type A
RBC-005N	Guardrail Connector to Bridge End Type A Notes
RBC-006	Guardrail Connector to Bridge End Type A-1
RBI-001	Typical Guardrail Installations
RBI-002	Typical Guardrail Installations
RBI-003	Typical Installation for Guardrail End Treatment Type 2A
RBI-004	Installation of Guardrail End Treatment Type 1
RBR-001	Steel Beam Guardrail "W" Beam
RBR-005	Guardrail Components
RBR-015	Steel Guardrail Posts
RBR-016	Timber Guardrail Posts
RBR-018	Guardrail Transition System
RBR-020	Guardrail End Treatment Type 1
RBR-025	Guardrail End Treatment Type 2A
RBR-055	Delineators for Guardrail
RBR-060	Delineators at Narrow Shoulder Bridges
RDD-040	Channel Lining Class II and III
RDH-020	Sloped and Flared Headwalls for 12" to 27" pipe
RDI-001	Culvert and Storm Sewer Pipe Types and Cover Heights
RDI-011	Culvert, Entrance and Storm Sewer Pipe Types and Cover Heights
RDI-020	Pipe Bedding for Culverts, Entrance and Storm Sewer Pipe
RDI-021	Pipe Bedding for Culverts, Entrance and Storm Sewer Reinforced Conc. Pipe
RDI-025	Pipe Bedding Trench Condition

RDI-026	Pipe Bedding Trench Condition Reinforced Conc. Pipe
RDI-040	Erosion Control Blanket Slope Installation
RDI-041	Erosion Control Blanket Channel Installation
RDP-001	Perforated Pipe Types and Cover Heights
RDP-005	Perforated Pipe for Subgrade Drainage on Two-Lane (Class 2) and Multi-Lane Roads
RDP-010	Perforated Pipe Headwalls
RDX-225	Silt Trap Type B
RGS-001	Curve Widening and Superelevation Transitions
RGS-002	Superelevation for Multilane Pavement
RGX-001	Miscellaneous Standards
RGX-200	One Point Proctor Family of Curves
RPM-001	Permanent U-Turn Median Opening
TPM-100	Pavement Marker Arrangements Multi-Lane Roadways
TPM-105	Pavement Marker Arrangements Multi-Lane Roadways
TPM-170	Flexible Delineator Post Arrangements for Horizontal Curves
TPM-171	Flexible Delineator Post Arrangements for Interchange Ramps and Crossovers
TPM-200	Typical Entrance Ramp Markings for Interstates and Parkways
TPM-201	Typical Exit Ramp Markings for Interstates and Parkways
TPM-202	Typical Exit Ramp Markings for Interstates and Parkways
TPM-204	Typical Markings for Gore Areas
TPR-115	Shoulder and Edgeline Rumble Strip Placement Details
TPR-130	Rumble Strip Details Multi-Lane Roadways and Ramps
TTC-115	Lane Closure Multi-Lane Highway Case I
TTC-120	Lane Closure Multi-Lane Highway Case II
TTC-135	Shoulder Closure
TTC-160	Temporary Pavement Marker Arrangements for Lane Closures
TTD-120	Double Fines Zone Signs
TTD-125	Pavement Condition Warning Signs
TTD-130	Speed Zone Signing for Work Zones
TTS-110	Mobile Operation for Paint Striping Case III
TTS-115	Mobile Operation for Paint Striping Case IV
TTS-120	Mobile Operation for Durable Striping Case 1
BHS-014	Thrie-Beam Guardrail Transition (TL-3)

"General Decision Number: KY20240040 05/31/2024

Superseded General Decision Number: KY20230040

State: Kentucky

Construction Type: Highway

Counties: Allen, Ballard, Butler, Caldwell, Calloway, Carlisle, Christian, Crittenden, Daviess, Edmonson, Fulton, Graves, Hancock, Henderson, Hickman, Hopkins, Livingston, Logan, Lyon, Marshall, McCracken, McLean, Muhlenberg, Ohio, Simpson, Todd, Trigg, Union, Warren and Webster Counties in Kentucky.

HIGHWAY CONSTRUCTION PROJECTS (excluding tunnels, building structures in rest area projects & railroad construction; bascule, suspension & spandrel arch bridges designed for commercial navigation, bridges involving marine construction; and other major bridges).

Note: Contracts subject to the Davis-Bacon Act are generally required to pay at least the applicable minimum wage rate required under Executive Order 14026 or Executive Order 13658. Please note that these Executive Orders apply to covered contracts entered into by the federal government that are subject to the Davis-Bacon Act itself, but do not apply to contracts subject only to the Davis-Bacon Related Acts, including those set forth at 29 CFR 5.1(a)(1).

<p>If the contract is entered into on or after January 30, 2022, or the contract is renewed or extended (e.g., an option is exercised) on or after January 30, 2022:</p>	<ul style="list-style-type: none"> . Executive Order 14026 generally applies to the contract. . The contractor must pay all covered workers at least \$17.20 per hour (or the applicable wage rate listed on this wage determination, if it is higher) for all hours spent performing on the contract in 2024.
<p>If the contract was awarded on or between January 1, 2015 and January 29, 2022, and the contract is not renewed or extended on or after January 30, 2022:</p>	<ul style="list-style-type: none"> . Executive Order 13658 generally applies to the contract. . The contractor must pay all covered workers at least \$12.90 per hour (or the applicable wage rate listed on this wage determination, if it is higher) for all hours spent performing on that contract in 2024.

The applicable Executive Order minimum wage rate will be adjusted annually. If this contract is covered by one of the Executive Orders and a classification considered necessary for performance of work on the contract does not appear on this wage determination, the contractor must still submit a conformance request.

Additional information on contractor requirements and worker protections under the Executive Orders is available at <http://www.dol.gov/whd/govcontracts>.

Modification Number	Publication Date
0	01/05/2024
1	02/09/2024
2	03/15/2024
3	05/31/2024

BRIN0004-002 06/01/2023

BALLARD, BUTLER, CALDWELL, CARLISLE, CRITTENDEN, DAVIESS, EDMONSON, FULTON, GRAVES, HANCOCK, HENDERSON, HICKMAN, HOPKINS, LIVINGSTON, LYON, MARSHALL, MCCRACKEN, MCLEAN, MUHLENBERG, OHIO, UNION, and WEBSTER COUNTIES

	Rates	Fringes
BRICKLAYER		
Ballard, Caldwell, Carlisle, Crittenden, Fulton, Graves, Hickman, Livingston, Lyon, Marshall, and McCracken Counties.....	\$ 34.17	19.60
Butler, Edmonson, Hopkins, Muhlenberg, and Ohio Counties.....	\$ 32.28	15.95
Daviess, Hancock, Henderson, McLean, Union, and Webster Counties.....	\$ 34.17	19.60

 BRTN0004-005 06/01/2023

ALLEN, CALLOWAY, CHRISTIAN, LOGAN, SIMPSON, TODD, TRIGG, and WARREN COUNTIES

	Rates	Fringes
BRICKLAYER.....	\$ 32.28	15.95

 * CARP0357-002 04/01/2024

	Rates	Fringes
CARPENTER.....	\$ 32.90	23.37
DIVER.....	\$ 49.73	23.37
PILEDRIVERMAN.....	\$ 33.40	23.37

 ELEC0369-006 05/28/2023

BUTLER, EDMONSON, LOGAN, TODD & WARREN COUNTIES:

	Rates	Fringes
ELECTRICIAN.....	\$ 35.39	20.45

 ELEC0429-001 06/01/2022

ALLEN & SIMPSON COUNTIES:

	Rates	Fringes
ELECTRICIAN.....	\$ 31.55	14.08

ELEC0816-002 07/01/2023		

BALLARD, CALDWELL, CALLOWAY, CARLISLE, CHRISTIAN, CRITTENDEN,
 FULTON (Except a 5 mile radius of City Hall in Fulton), GRAVES,
 HICKMAN, LIVINGSTON, LYON, MARSHALL, MCCRACKEN & TRIGG COUNTIES:

	Rates	Fringes
ELECTRICIAN.....	\$ 34.94	28%+8.35

ELEC1701-003 07/01/2023		

DAVISS, HANCOCK, HENDERSON, HOPKINS, MCLEAN, MUHLENBERG, OHIO,
 UNION & WEBSTER COUNTIES:

	Rates	Fringes
ELECTRICIAN.....	\$ 35.60	8.35+30.8%

ELEC1925-002 01/01/2024		

FULTON COUNTY (Up to a 5 mile radius of City Hall in Fulton):

	Rates	Fringes
CABLE SPLICER.....	\$ 28.20	15.27
ELECTRICIAN.....	\$ 27.95	15.26

ENGI0181-017 07/01/2023		

	Rates	Fringes
POWER EQUIPMENT OPERATOR		
GROUP 1.....	\$ 38.55	18.60
GROUP 2.....	\$ 35.69	18.60
GROUP 3.....	\$ 36.14	18.60
GROUP 4.....	\$ 35.37	18.60

OPERATING ENGINEER CLASSIFICATIONS

GROUP 1 - A-Frame Winch Truck; Auto Patrol; Backfiller;
 Batch Plant; Bituminous Paver; Bituminous Transfer
 Machine; Boom Cat; Bulldozer; Mechanic; Cableway; Carry-All
 Scoop; Carry Deck Crane; Central Compressor Plant; Cherry
 Picker; Clamshell; Concrete Mixer (21 cu. ft. or Over);
 Concrete Paver; Truck-Mounted Concrete Pump; Core Drill;
 Crane; Crusher Plant; Derrick; Derrick Boat; Ditching &
 Trenching Machine; Dragline; Dredge Operator; Dredge
 Engineer; Elevating Grader & Loaders; Grade-All; Gurries;
 Heavy Equipment Robotics Operator/Mechanic; High Lift;
 Hoe-Type Machine; Hoist (Two or More Drums); Hoisting
 Engine (Two or More Drums); Horizontal Directional Drill
 Operator; Hydrocrane; Hyster; KeCal Loader; LeTourneau;
 Locomotive; Mechanic; Mechanically Operated Laser Screed;

HOPKINS COUNTY
 NHPPIM 001 (012)

Mechanic Welder; Mucking Machine; Motor Scraper; Orangepeel Bucket; Overhead Crane; Piledriver; Power Blade; Pumpcrete; Push Dozer; Rock Spreader, attached to equipment; Rotary Drill; Roller (Bituminous); Rough Terrain Crane; Scarifier; Scoopmobile; Shovel; Side Boom; Subgrader; Tailboom; Telescoping Type Forklift; Tow or Push Boat; Tower Crane (French, German & other types); Tractor Shovel; Truck Crane; Tunnel Mining Machines, including Moles, Shields or similar types of Tunnel Mining Equipment

GROUP 2 - Air Compressor (Over 900 cu. ft. per min.); Bituminous Mixer; Boom Type Tamping Machine; Bull Float; Concrete Mixer (Under 21 cu. ft.); Dredge Engineer; Electric Vibrator; Compactor/Self-Propelled Compactor; Elevator (One Drum or Buck Hoist); Elevator (When used to Hoist Building Material); Finish Machine; Firemen & Hoist (One Drum); Flexplane; Forklift (Regardless of Lift Height); Form Grader; Joint Sealing Machine; Outboard Motor Boat; Power Sweeper (Riding Type); Roller (Rock); Ross Carrier; Skid Mounted or Trailer Mounted Concrete Pump; Skid Steer Machine with all Attachments; Switchman or Brakeman; Throttle Valve Person; Tractair & Road Widening Trencher; Tractor (50 H.P. or Over); Truck Crane Oiler; Tugger; Welding Machine; Well Points;& Whirley Oiler

GROUP 3 -All Off Road Material Handling Equipment, including Articulating Dump Trucks; Greaser on Grease Facilities servicing Heavy Equipment

GROUP 4 - Bituminous Distributor; Burlap & Curing Machine; Cement Gun; Concrete Saw; Conveyor; Deckhand Oiler; Grout Pump; Hydraulic Post Driver; Hydro Seeder; Mud Jack; Oiler; Paving Joint Machine; Power Form Handling Equipment; Pump; Roller (Earth); Steerman; Tamping Machine; Tractor (Under 50 H.P.); & Vibrator

CRANES - with booms 150 ft. & Over (Including JIB), and where the length of the boom in combination with the length of the piling equals or exceeds 150 ft. - \$1.00 above Group 1 rate

EMPLOYEES ASSIGNED TO WORK BELOW GROUND LEVEL ARE TO BE PAID 10% ABOVE BASIC WAGE RATE. THIS DOES NOT APPLY TO OPEN CUT WORK.

 IRON0070-005 06/01/2023

BUTLER COUNTY (Eastern eighth, including the Townships of Decker, Lee & Tilford);
 EDMONSON COUNTY (Northern three-fourths, including the Townships of Asphalt, Bee Spring, Brownsville, Grassland, Huff, Kyrock, Lindseyville, Mammoth Cave, Ollie, Prosperity, Rhoda, Sunfish & Sweden)

Rates Fringes

IRONWORKER

Structural; Ornamental;
 Reinforcing; Precast
 Concrete Erectors.....\$ 32.59 24.50

 IRON0103-004 04/01/2023

HOPKINS COUNTY
 HANCOCK, HENDERSON, HOPKINS, MCLEAN, OHIO, UNION &
 WEBSTER COUNTIES

BUTLER COUNTY (Townships of Aberdeen, Bancock, Casey, Dexterville, Dunbar, Elfie, Gilstrap, Huntsville, Logansport, Monford, Morgantown, Provo, Rochester, South Hill & Welchs Creek);

CALDWELL COUNTY (Northeastern third, including the Township of Creswell);

CHRISTIAN COUNTY (Northern third, including the Townships of Apex, Crofton, Kelly, Mannington & Wynns);

CRITTENDEN COUNTY (Northeastern half, including the Townships of Grove, Mattoon, Repton, Shady Grove & Tribune);

MUHLENBERG COUNTY (Townships of Bavier, Beech Creek Junction, Benton, Brennen, Browder, Central City, Cleaton, Depoy, Drakesboro, Eunis, Graham, Hillside, Luzerne, Lynn City, Martwick, McNary, Millport, Moorman, Nelson, Paradise, Powderly, South Carrollton, Tarina & Weir)

	Rates	Fringes
Ironworkers:.....	\$ 31.99	26.20

IRON0492-003 05/01/2023		

ALLEN, LOGAN, SIMPSON, TODD & WARREN COUNTIES

BUTLER COUNTY (Southern third, including the Townships of Boston, Berrys Lick, Dimple, Jetson, Quality, Sharer, Sugar Grove & Woodbury);

CHRISTIAN COUNTY (Eastern two-thirds, including the Townships of Bennettstown, Casky, Herndon, Hopkinsville, Howell, Masonville, Pembroke & Thompsonville);

EDMONSON COUNTY (Southern fourth, including the Townships of Chalybeate & Rocky Hill);

MUHLENBERG COUNTY (Southern eighth, including the Townships of Dunnior, Penrod & Rosewood)

	Rates	Fringes
Ironworkers:.....	\$ 32.53	17.23

IRON0782-006 08/01/2023		

BALLARD, CALLOWAY, CARLISLE, FULTON, GRAVES, HICKMAN, LIVINGSTON, LYON, MARSHALL, MCCRACKEN & TRIGG COUNTIES

CALDWELL COUNTY (Southwestern two-thirds, including the Townships of Cedar Bluff, Cider, Claxton, Cobb, Crowtown, Dulaney, Farmersville, Fredonia, McGowan, Otter Pond & Princeton);

CHRISTIAN COUNTY (Western third, Excluding the Townships of Apex, Crofton, Kelly, Mannington, Wynns, Bennettstown, Casky, Herndon, Hopkinsville, Howell, Masonville, Pembroke & Thompsonville);

CRITTENDEN COUNTY (Southwestern half, including the Townships of Crayne, Dycusburg, Frances, Marion, Mexico, Midway, Sheridan & Told)

	Rates	Fringes
Ironworkers:		
Projects with a total contract cost of \$20,000,000.00 or above.....	\$ 34.75	25.52

HOPKINS COUNTY
 NHPPIM 0691 (019) Other Work.....\$ 33.01 25.52

 LAB00189-005 07/01/2023

BALLARD, CALLOWAY, CARLISLE, FULTON, GRAVES, HICKMAN,
 LIVINGSTON, LYON, MARSHALL & MCCRACKEN COUNTIES

	Rates	Fringes
Laborers:		
GROUP 1.....	\$ 23.96	17.57
GROUP 2.....	\$ 24.21	17.57
GROUP 3.....	\$ 24.26	17.57
GROUP 4.....	\$ 24.86	17.57

LABORER CLASSIFICATIONS

GROUP 1 - Aging & Curing of Concrete; Asbestos Abatement Worker; Asphalt Plant; Asphalt; Batch Truck Dump; Carpenter Tender; Cement Mason Tender; Cleaning of Machines; Concrete; Demolition; Dredging; Environmental - Nuclear, Radiation, Toxic & Hazardous Waste - Level D; Flagperson; Grade Checker; Hand Digging & Hand Back Filling; Highway Marker Placer; Landscaping, Mesh Handler & Placer; Puddler; Railroad; Rip-rap & Grouter; Right-of-Way; Sign, Guard Rail & Fence Installer; Signal Person; Sound Barrier Installer; Storm & Sanitary Sewer; Swamper; Truck Spotter & Dumper; Wrecking of Concrete Forms; General Cleanup

GROUP 2 - Batter Board Man (Sanitary & Storm Sewer); Brickmason Tender; Mortar Mixer Operator; Scaffold Builder; Burner & Welder; Bushhammer; Chain Saw Operator; Concrete Saw Operator; Deckhand Scow Man; Dry Cement Handler; Environmental - Nuclear, Radiation, Toxic & Hazardous Waste - Level C; Forklift Operator for Masonary; Form Setter; Green Concrete Cutting; Hand Operated Grouter & Grinder Machine Operator; Jackhammer; Pavement Breaker; Paving Joint Machine; Pipelayer; Plastic Pipe Fusion; Power Driven Georgia Buggy & Wheel Barrow; Power Post Hole Digger; Precast Manhole Setter; Walk-Behind Tamper; Walk-Behind Trencher; Sand Blaster; Concrete Chipper; Surface Grinder; Vibrator Operator; Wagon Driller

GROUP 3 - Asphalt Luteman & Raker; Gunnite Nozzleman; Gunnite Operator & Mixer; Grout Pump Operator; Blaster; Side Rail Setter; Rail Paved Ditches; Screw Operator; Tunnel (Free Air); Water Blaster

GROUP 4 - Caisson Worker (Free Air); Cement Finisher; Environmental - Nuclear, Radiation, Toxic & Hazardous Waste - Levels A & B; Miner & Driller (Free Air); Tunnel Blaster; & Tunnel Mucker (Free Air); Directional & Horizontal Boring; Air Track Drillers (All Types); Powdermen & Blasters; Troxler & Concrete Tester if Laborer is Utilized

 LAB00189-006 07/01/2023

ALLEN, BUTLER, CALDWELL, CHRISTIAN, DAVIESS, EDMONSON, HANCOCK,
 HOPKINS, LOGAN, MCLEAN, MUHLENBERG, OHIO, SIMPSON, TODD, TRIGG
 & WARREN COUNTIES

Rates Fringes

Laborers:

GROUP 1.....	\$ 23.96	17.57
GROUP 2.....	\$ 24.26	17.57
GROUP 3.....	\$ 24.21	17.57
GROUP 4.....	\$ 24.86	17.57

LABORER CLASSIFICATIONS

GROUP 1 - Aging & Curing of Concrete; Asbestos Abatement Worker; Asphalt Plant; Asphalt; Batch Truck Dump; Carpenter Tender; Cement Mason Tender; Cleaning of Machines; Concrete; Demolition; Dredging; Environmental - Nuclear, Radiation, Toxic & Hazardous Waste - Level D; Flagperson; Grade Checker; Hand Digging & Hand Back Filling; Highway Marker Placer; Landscaping, Mesh Handler & Placer; Puddler; Railroad; Rip-rap & Grouter; Right-of-Way; Sign, Guard Rail & Fence Installer; Signal Person; Sound Barrier Installer; Storm & Sanitary Sewer; Swamper; Truck Spotter & Dumper; Wrecking of Concrete Forms; General Cleanup

GROUP 2 - Batter Board Man (Sanitary & Storm Sewer); Brickmason Tender; Mortar Mixer Operator; Scaffold Builder; Burner & Welder; Bushhammer; Chain Saw Operator; Concrete Saw Operator; Deckhand Scow Man; Dry Cement Handler; Environmental - Nuclear, Radiation, Toxic & Hazardous Waste - Level C; Forklift Operator for Masonary; Form Setter; Green Concrete Cutting; Hand Operated Grouter & Grinder Machine Operator; Jackhammer; Pavement Breaker; Paving Joint Machine; Pipelayer; Plastic Pipe Fusion; Power Driven Georgia Buggy & Wheel Barrow; Power Post Hole Digger; Precast Manhole Setter; Walk-Behind Tamper; Walk-Behind Trencher; Sand Blaster; Concrete Chipper; Surface Grinder; Vibrator Operator; Wagon Driller

GROUP 3 - Asphalt Luteman & Raker; Gunnite Nozzleman; Gunnite Operator & Mixer; Grout Pump Operator; Blaster; Side Rail Setter; Rail Paved Ditches; Screw Operator; Tunnel (Free Air); Water Blaster

GROUP 4 - Caisson Worker (Free Air); Cement Finisher; Environmental - Nuclear, Radiation, Toxic & Hazardous Waste - Levels A & B; Miner & Driller (Free Air); Tunnel Blaster; & Tunnel Mucker (Free Air); Directional & Horizontal Boring; Air Track Drillers (All Types); Powdermen & Blasters; Troxler & Concrete Tester if Laborer is Utilized

 LAB00561-001 07/01/2023

CRITTENDEN, HENDERSON, UNION & WEBSTER COUNTIES

	Rates	Fringes
Laborers:		
GROUP 1.....	\$ 24.81	17.60
GROUP 2.....	\$ 25.06	17.60
GROUP 3.....	\$ 25.11	17.60
GROUP 4.....	\$ 25.71	17.60

LABORER CLASSIFICATIONS

GROUP 1 - Aging & Curing of Concrete; Asbestos Abatement Worker; Asphalt Plant; Asphalt; Batch Truck Dump; Carpenter Tender; Cement Mason Tender; Cleaning of Machines;

HOPKINS COUNTY
 NHPPIM 0001(012)

Concrete; Demolition; Dredging; Environmental - Nuclear, Radiation, Toxic & Hazardous Waste - Level D; Flagperson; Grade Checker; Hand Digging & Hand Back Filling; Highway Marker Placer; Landscaping, Mesh Handler & Placer; Puddler; Railroad; Rip-rap & Grouter; Right-of-Way; Sign, Guard Rail & Fence Installer; Signal Person; Sound Barrier Installer; Storm & Sanitary Sewer; Swamper; Truck Spotter & Dumper; Wrecking of Concrete Forms; General Cleanup

GROUP 2 - Batter Board Man (Sanitary & Storm Sewer); Brickmason Tender; Mortar Mixer Operator; Scaffold Builder; Burner & Welder; Bushhammer; Chain Saw Operator; Concrete Saw Operator; Deckhand Scow Man; Dry Cement Handler; Environmental - Nuclear, Radiation, Toxic & Hazardous Waste - Level C; Forklift Operator for Masonary; Form Setter; Green Concrete Cutting; Hand Operated Grouter & Grinder Machine Operator; Jackhammer; Pavement Breaker; Paving Joint Machine; Pipelayer; Plastic Pipe Fusion; Power Driven Georgia Buggy & Wheel Barrow; Power Post Hole Digger; Precast Manhole Setter; Walk-Behind Tamper; Walk-Behind Trencher; Sand Blaster; Concrete Chipper; Surface Grinder; Vibrator Operator; Wagon Driller

GROUP 3 - Asphalt Luteman & Raker; Gunnite Nozzleman; Gunnite Operator & Mixer; Grout Pump Operator; Blaster; Side Rail Setter; Rail Paved Ditches; Screw Operator; Tunnel (Free Air); Water Blaster

GROUP 4 - Caisson Worker (Free Air); Cement Finisher; Environmental - Nuclear, Radiation, Toxic & Hazardous Waste - Levels A & B; Miner & Driller (Free Air); Tunnel Blaster; & Tunnel Mucker (Free Air); Directional & Horizontal Boring; Air Track Drillers (All Types); Powdermen & Blasters; Troxler & Concrete Tester if Laborer is Utilized

 PAIN0032-002 09/01/2023

BALLARD COUNTY

	Rates	Fringes
Painters:		
Bridges.....	\$ 36.12	20.97
All Other Work.....	\$ 33.82	20.97

Spray, Blast, Steam, High & Hazardous (Including Lead Abatement) and All Epoxy - \$1.00 Premium

 PAIN0118-003 06/01/2014

EDMONSON COUNTY:

	Rates	Fringes
Painters:		
Brush & Roller.....	\$ 18.50	11.97
Spray, Sandblast, Power Tools, Waterblast & Steam Cleaning.....	\$ 19.50	11.97

 * PAIN0156-006 04/01/2024

DAVISS, HANCOCK, HENDERSON, MCLEAN, OHIO, UNION & WEBSTER

	Rates	Fringes
Painters:		
BRIDGES		
GROUP 1.....	\$ 30.77	20.30
GROUP 3.....	\$ 31.77	20.30
GROUP 4.....	\$ 35.00	20.30
ALL OTHER WORK:		
GROUP 1.....	\$ 29.62	20.30
GROUP 2.....	\$ 30.37	20.30
GROUP 3.....	\$ 30.62	20.30
GROUP 4.....	\$ 31.77	20.30

PAINTER CLASSIFICATIONS

GROUP 1 - Brush & Roller

GROUP 2 - Plasterers

GROUP 3 - Spray; Sandblast; Power Tools; Waterblast;
 Steamcleaning; Brush & Roller of Mastics, Creosotes, Kwinch
 Koate & Coal Tar Epoxy

GROUP 4 - Spray of Mastics, Creosotes, Kwinch Koate & Coal
 Tar Epoxy

 PAIN0500-002 06/01/2023

CALDWELL, CALLOWAY, CARLISLE, CHRISTIAN, CRITTENDEN, FULTON,
 GRAVES, HICKMAN, HOPKINS, LIVINGSTON, LYON, MARSHALL, MCCRACKEN
 & TRIGG COUNTIES:

	Rates	Fringes
Painters:		
Bridges.....	\$ 30.00	15.40
All Other Work.....	\$ 23.75	15.40

Waterblasting units with 3500 PSI and above - \$.50 premium
 Spraypainting and all abrasive blasting - \$1.00 premium
 Work 40 ft. and above ground level - \$1.00 premium

 PLUM0184-002 07/01/2023

BALLARD, CALDWELL, CALLOWAY, CARLISLE, CHRISTIAN, CRITTENDEN,
 FULTON, GRAVES, HICKMAN, LIVINGSTON, LYON, MARSHALL, MCCRACKEN
 and TRIGG COUNTIES

	Rates	Fringes
Plumber; Steamfitter.....	\$ 39.86	18.98

 PLUM0502-004 08/01/2021

ALLEN, BUTLER, EDMONSON, SIMPSON & WARREN

	Rates	Fringes
--	-------	---------

HOPKINS COUNTY
 NHPPIN 0601(013) Plumber, Steamfitter.....\$ 38.07 20.78

 PLUM0633-002 07/01/2022

DAVISS, HANCOCK, HENDERSON, HOPKINS, LOGAN, MCLEAN,
 MUHLENBERG, OHIO, TODD, UNION & WEBSTER COUNTIES:

	Rates	Fringes
PLUMBER/PIPEFITTER.....	\$ 33.97	19.30

 * TEAM0089-003 03/31/2024

ALLEN, BUTLER, EDMONSON, LOGAN, SIMPSON & WARREN COUNTIES

	Rates	Fringes
Truck drivers:		
Zone 1:		
Group 1.....	\$ 23.53	27.39
Group 2.....	\$ 23.70	27.39
Group 3.....	\$ 23.78	27.39
Group 4.....	\$ 23.80	27.39

GROUP 1 - Greaser; Tire Changer

GROUP 2 - Truck Mechanic; Single Axle Dump; Flat Bed; All Terrain Vehicles when used to haul materials; Semi Trailer or Pole Trailer when used to pull building materials and equipment; Tandem Axle Dump; Driver of Distributors

GROUP 3 - Mixer All Types

GROUP 4 - Winch and A-Frame when used in transporting materials; Ross Carrier; Fork Lift when used to transport building materials; Driver on Pavement Breaker; Euclid and Other Heavy Earth Moving Equipment; Low Boy; Articulator Cat; Five Axle Vehicle

 * TEAM0215-003 03/31/2024

DAVISS, HANCOCK, HENDERSON, HOPKINS, MCLEAN, MUHLENBERG, OHIO & WEBSTER COUNTIES

	Rates	Fringes
TRUCK DRIVER		
Group 1.....	\$ 25.15	27.39
Group 2.....	\$ 25.38	27.39
Group 3.....	\$ 25.45	27.39
Group 4.....	\$ 25.46	27.39

GROUP 1: Greaser, Tire Changer

GROUP 2: Truck Mechanic

GROUP 3: Single Axle Dump; Flat Bed; All Terrain Vehicle when used to haul materials; Semi Trailer or Pole Trailer when used to pull building materials and equipment; Tandem Axle Dump; Driver of Distributors; Mixer All Types

GROUP 4: Euclid and other heavy earth moving equipment; Low

HOPKINS COUNTY
NHPPIM 0801(012)

Boy, Articulator Cat; 5 Axle Vehicle; Winch and A- Frame
when used in transporting materials; Ross Carrier; Fork
Lift when used to transport building materials; Driver on
Pavement Breaker

* TEAM0236-001 03/31/2024

BALLARD, CALDWELL, CALLOWAY, CARLISLE, CHRISTIAN, CRITTENDEN,
FULTON, GRAVES, HICKMAN, LIVINGSTON, LYON, MARSHALL,
MCCRACKEN, TODD & TRIGG COUNTIES

	Rates	Fringes
TRUCK DRIVER		
Group 1.....	\$ 23.52	27.39
Group 2.....	\$ 23.70	27.39
Group 3.....	\$ 23.70	27.39
Group 4.....	\$ 23.78	27.39
Group 5.....	\$ 23.80	27.39

GROUP 1: Greaser, Tire Changer

GROUP 2: Truck Mechanic

GROUP 3: Single Axle Dump; Flat Bed; All Terrain Vehicle when
used to haul materials; Semi Trailer or Pole Trailer when
used to pull building materials and equipment; Tandem Axle
Dump; Drivers of Distributors

GROUP 4: Euclid and other heavy earth moving equipment; Low
Boy; Articulator Cat; Five Axle Vehicle; Winch and A-Frame
when used in transporting materials; Ross Carrier

GROUP 5: Mixer All Types

WELDERS - Receive rate prescribed for craft performing
operation to which welding is incidental.

=====

Note: Executive Order (EO) 13706, Establishing Paid Sick Leave
for Federal Contractors applies to all contracts subject to the
Davis-Bacon Act for which the contract is awarded (and any
solicitation was issued) on or after January 1, 2017. If this
contract is covered by the EO, the contractor must provide
employees with 1 hour of paid sick leave for every 30 hours
they work, up to 56 hours of paid sick leave each year.
Employees must be permitted to use paid sick leave for their
own illness, injury or other health-related needs, including
preventive care; to assist a family member (or person who is
like family to the employee) who is ill, injured, or has other
health-related needs, including preventive care; or for reasons
resulting from, or to assist a family member (or person who is
like family to the employee) who is a victim of, domestic
violence, sexual assault, or stalking. Additional information
on contractor requirements and worker protections under the EO
is available at
<https://www.dol.gov/agencies/whd/government-contracts>.

Unlisted classifications needed for work not included within
the scope of the classifications listed may be added after

award only as provided in the labor standards contract clauses
(29CFR 5.5 (a) (1) (iii)).

The body of each wage determination lists the classification and wage rates that have been found to be prevailing for the cited type(s) of construction in the area covered by the wage determination. The classifications are listed in alphabetical order of ""identifiers"" that indicate whether the particular rate is a union rate (current union negotiated rate for local), a survey rate (weighted average rate) or a union average rate (weighted union average rate).

Union Rate Identifiers

A four letter classification abbreviation identifier enclosed in dotted lines beginning with characters other than ""SU"" or ""UAVG"" denotes that the union classification and rate were prevailing for that classification in the survey. Example: PLUM0198-005 07/01/2014. PLUM is an abbreviation identifier of the union which prevailed in the survey for this classification, which in this example would be Plumbers. 0198 indicates the local union number or district council number where applicable, i.e., Plumbers Local 0198. The next number, 005 in the example, is an internal number used in processing the wage determination. 07/01/2014 is the effective date of the most current negotiated rate, which in this example is July 1, 2014.

Union prevailing wage rates are updated to reflect all rate changes in the collective bargaining agreement (CBA) governing this classification and rate.

Survey Rate Identifiers

Classifications listed under the ""SU"" identifier indicate that no one rate prevailed for this classification in the survey and the published rate is derived by computing a weighted average rate based on all the rates reported in the survey for that classification. As this weighted average rate includes all rates reported in the survey, it may include both union and non-union rates. Example: SULA2012-007 5/13/2014. SU indicates the rates are survey rates based on a weighted average calculation of rates and are not majority rates. LA indicates the State of Louisiana. 2012 is the year of survey on which these classifications and rates are based. The next number, 007 in the example, is an internal number used in producing the wage determination. 5/13/2014 indicates the survey completion date for the classifications and rates under that identifier.

Survey wage rates are not updated and remain in effect until a new survey is conducted.

Union Average Rate Identifiers

Classification(s) listed under the UAVG identifier indicate that no single majority rate prevailed for those classifications; however, 100% of the data reported for the classifications was union data. EXAMPLE: UAVG-OH-0010 08/29/2014. UAVG indicates that the rate is a weighted union average rate. OH indicates the state. The next number, 0010 in the example, is an internal number used in producing the wage

determination. 08/29/2014 indicates the survey completion date for the classifications and rates under that identifier.

A UAVG rate will be updated once a year, usually in January of each year, to reflect a weighted average of the current negotiated/CBA rate of the union locals from which the rate is based.

State Adopted Rate Identifiers

Classifications listed under the ""SA"" identifier indicate that the prevailing wage rate set by a state (or local) government was adopted under 29 C.F.R. 1.3(g)-(h). Example: SAME2023-007 01/03/2024. SA reflects that the rates are state adopted. ME refers to the State of Maine. 2023 is the year during which the state completed the survey on which the listed classifications and rates are based. The next number, 007 in the example, is an internal number used in producing the wage determination. 01/03/2024 reflects the date on which the classifications and rates under the ?SA? identifier took effect under state law in the state from which the rates were adopted.

WAGE DETERMINATION APPEALS PROCESS

1.) Has there been an initial decision in the matter? This can be:

- * an existing published wage determination
- * a survey underlying a wage determination
- * a Wage and Hour Division letter setting forth a position on a wage determination matter
- * a conformance (additional classification and rate) ruling

On survey related matters, initial contact, including requests for summaries of surveys, should be with the Wage and Hour National Office because National Office has responsibility for the Davis-Bacon survey program. If the response from this initial contact is not satisfactory, then the process described in 2.) and 3.) should be followed.

With regard to any other matter not yet ripe for the formal process described here, initial contact should be with the Branch of Construction Wage Determinations. Write to:

Branch of Construction Wage Determinations
Wage and Hour Division
U.S. Department of Labor
200 Constitution Avenue, N.W.
Washington, DC 20210

2.) If the answer to the question in 1.) is yes, then an interested party (those affected by the action) can request review and reconsideration from the Wage and Hour Administrator (See 29 CFR Part 1.8 and 29 CFR Part 7). Write to:

Wage and Hour Administrator
U.S. Department of Labor
200 Constitution Avenue, N.W.
Washington, DC 20210

The request should be accompanied by a full statement of the interested party's position and by any information (wage payment data, project description, area practice material,

etc.) that the requestor considers relevant to the issue.

3.) If the decision of the Administrator is not favorable, an interested party may appeal directly to the Administrative Review Board (formerly the Wage Appeals Board). Write to:

Administrative Review Board
U.S. Department of Labor
200 Constitution Avenue, N.W.
Washington, DC 20210

4.) All decisions by the Administrative Review Board are final.

=====

END OF GENERAL DECISION"

PROPOSAL BID ITEMS

241106

Page 1 of 3

Report Date 6/17/24

Section: 0001 - PAVEMENT

LINE	BID CODE	ALT	DESCRIPTION	QUANTITY	UNIT	UNIT PRIC	FP	AMOUNT
0010	00100		ASPHALT SEAL AGGREGATE	398.00	TON		\$	
0020	00103		ASPHALT SEAL COAT	48.00	TON		\$	
0030	00194		LEVELING & WEDGING PG76-22	1,000.00	TON		\$	
0040	00217		CL4 ASPH BASE 1.00D PG64-22	1,604.00	TON		\$	
0050	00219		CL4 ASPH BASE 1.00D PG76-22	25,640.00	TON		\$	
0060	00335		CL4 ASPH SURF 0.50A PG76-22	14,814.00	TON		\$	
0070	02676		MOBILIZATION FOR MILL & TEXT	1.00	LS		\$	
0080	02677		ASPHALT PAVE MILLING & TEXTURING	28,949.00	TON		\$	
0090	24785EC		FIBER REINFORCEMENT FOR HMA	38,971.00	TON		\$	
0100	24891EC		PAVE MOUNT INFRARED TEMP EQUIPMENT	2,889,801.00	SF		\$	
0110	24970EC		ASPHALT MATERIAL FOR TACK NON-TRACKING	112.00	TON		\$	

Section: 0002 - ROADWAY

LINE	BID CODE	ALT	DESCRIPTION	QUANTITY	UNIT	UNIT PRIC	FP	AMOUNT
0120	00001		DGA BASE	2,500.00	TON		\$	
0130	00071		CRUSHED AGGREGATE SIZE NO 57	4.00	TON		\$	
0140	00078		CRUSHED AGGREGATE SIZE NO 2	2,624.00	TON		\$	
0150	01001		PERFORATED PIPE-6 IN	37.00	LF		\$	
0160	01011		NON-PERFORATED PIPE-6 IN	8.00	LF		\$	
0170	01029		PERF PIPE HEADWALL TY 3-6 IN	1.00	EACH		\$	
0180	01982		DELINEATOR FOR GUARDRAIL MONO DIRECTIONAL WHITE (REVISED 6-17-2024)	15.00	EACH		\$	
0190	01983		DELINEATOR FOR GUARDRAIL MONO DIRECTIONAL YELLOW (REVISED 6-17-24)	19.00	EACH		\$	
0200	02003		RELOCATE TEMP CONC BARRIER	1,035.00	LF		\$	
0210	02165		REMOVE PAVED DITCH	425.00	SQYD		\$	
0220	02200		ROADWAY EXCAVATION	3,729.00	CUYD		\$	
0230	02367		GUARDRAIL END TREATMENT TYPE 1 (REVISED 6-17-24)	9.00	EACH		\$	
0240	02369		GUARDRAIL END TREATMENT TYPE 2A (REVISED 6-17-24)	6.00	EACH		\$	
0250	02381		REMOVE GUARDRAIL (REVISED 6-17-24)	937.50	LF		\$	
0260	02383		REMOVE & RESET GUARDRAIL	50.00	LF		\$	
0270	02387		GUARDRAIL CONNECTOR TO BRIDGE END TY A-1	2.00	EACH		\$	
0275	02403		REMOVE CONCRETE MASONRY (ADDED 6-17-24)	44.60	CUYD		\$	
0280	02483		CHANNEL LINING CLASS II	253.00	TON		\$	
0290	02562		TEMPORARY SIGNS	3,500.00	SQFT		\$	
0300	02604		FABRIC-GEOTEXTILE CLASS 1A	8,887.00	SQYD		\$	
0310	02650		MAINTAIN & CONTROL TRAFFIC	1.00	LS		\$	
0320	02654		TRUCK MOUNTED ATTENUATOR	2.00	EACH		\$	
0330	02671		PORTABLE CHANGEABLE MESSAGE SIGN	6.00	EACH		\$	

PROPOSAL BID ITEMS

241106

Page 2 of 3

Report Date 6/17/24

LINE	BID CODE	ALT	DESCRIPTION	QUANTITY	UNIT	UNIT PRIC	FP	AMOUNT
0340	02704		SILT TRAP TYPE B	10.00	EACH		\$	
0350	02705		SILT TRAP TYPE C	5.00	EACH		\$	
0360	02707		CLEAN SILT TRAP TYPE B	10.00	EACH		\$	
0370	02708		CLEAN SILT TRAP TYPE C	5.00	EACH		\$	
0380	02775		ARROW PANEL	4.00	EACH		\$	
0390	02898		RELOCATE CRASH CUSHION	1.00	EACH		\$	
0400	03171		CONCRETE BARRIER WALL TYPE 9T	1,035.00	LF		\$	
0410	03240		BASE FAILURE REPAIR	130.00	SQYD		\$	
0420	05950		EROSION CONTROL BLANKET	500.00	SQYD		\$	
0430	06401		FLEXIBLE DELINEATOR POST-M/W	639.00	EACH		\$	
0440	06404		FLEXIBLE DELINEATOR POST-M/Y	120.00	EACH		\$	
0450	06511		PAVE STRIPING-TEMP PAINT-6 IN	348,480.00	LF		\$	
0460	06542		PAVE STRIPING-THERMO-6 IN W	61,828.00	LF		\$	
0470	06543		PAVE STRIPING-THERMO-6 IN Y	48,938.00	LF		\$	
0480	06546		PAVE STRIPING-THERMO-12 IN W	3,642.00	LF		\$	
0490	06549		PAVE STRIPING-TEMP REM TAPE-B	7,560.00	LF		\$	
0500	06550		PAVE STRIPING-TEMP REM TAPE-W	6,720.00	LF		\$	
0510	06551		PAVE STRIPING-TEMP REM TAPE-Y	6,720.00	LF		\$	
0520	06556		PAVE STRIPING-DUR TY 1-6 IN W	873.00	LF		\$	
0530	06557		PAVE STRIPING-DUR TY 1-6 IN Y	698.00	LF		\$	
0540	06565		PAVE MARKING-THERMO X-WALK-6 IN	397.00	LF		\$	
0550	06568		PAVE MARKING-THERMO STOP BAR-24IN	48.00	LF		\$	
0560	06574		PAVE MARKING-THERMO CURV ARROW	16.00	EACH		\$	
0570	06613		INLAID PAVEMENT MARKER-B W/R	733.00	EACH		\$	
0580	06614		INLAID PAVEMENT MARKER-B Y/R	76.00	EACH		\$	
0585	08100		CONCRETE-CLASS A (ADDED 6-17-24)	111.30	CUYD		\$	
0586	08104		CONCRETE-CLASS AA (ADDED 6-17-24)	8.30	CUYD		\$	
0587	08150		STEEL REINFORCEMENT (ADDED 6-17-24)	14,193.00	LB		\$	
0588	08151		STEEL REINFORCEMENT-EPOXY COATED (ADDED 6-17-24)	1,004.00	LB		\$	
0590	08903		CRASH CUSHION TY VI CLASS BT TL3	1.00	EACH		\$	
0600	10020NS		FUEL ADJUSTMENT	66,119.00	DOLL	\$1.00	\$	\$66,119.00
0610	10030NS		ASPHALT ADJUSTMENT	166,072.00	DOLL	\$1.00	\$	\$166,072.00
0620	20071EC		JOINT ADHESIVE	87,120.00	LF		\$	
0630	20191ED		OBJECT MARKER TY 3 (REVISED 6-17-24)	9.00	EACH		\$	
0640	20362ES403		SHOULDER RUMBLE STRIPS-SAWED	94,784.00	LF		\$	
0650	20411ED		LAW ENFORCEMENT OFFICER	250.00	HOURL		\$	
0655	20432ES112		REMOVE CRASH CUSHION (ADDED 6-17-24)	4.00	EACH		\$	
0660	21802EN		G/R STEEL W BEAM-S FACE (7 FT POST) (ADDED 6-17-24)	1,987.50	LF		\$	
0670	22664EN		WATER BLASTING EXISTING STRIPE	87,120.00	LF		\$	
0675	23378EC		CONCRETE SEALING (ADDED 6-17-24)	3,321.00	SQFT		\$	
0680	24679ED		PAVE MARK THERMO CHEVRON	2,019.00	SQFT		\$	
0690	24683ED		PAVE MARKING-THERMO DOTTED LANE EXTEN	923.00	LF		\$	
0700	24880EC		REMOVE PAVEMENT MARKER	809.00	EACH		\$	

PROPOSAL BID ITEMS

241106

Page 3 of 3

Report Date 6/17/24

LINE	BID CODE	ALT	DESCRIPTION	QUANTITY	UNIT	UNIT PRIC	FP	AMOUNT
0710	25075EC		QUEUE PROTECTION VEHICLE	960.00	HOUR		\$	
0715	25078ED		THRIE BEAM GUARDRAIL TRANSITION TL-3 (ADDED 6-17-24)	10.00	EACH		\$	
0720	25117EC		FURNISH QUEUE PROTECTION VEHICLES	4.00	MONT		\$	
0730	26136EC		PORTABLE QUEUE WARNING ALERT SYSTEM	7.00	MONT		\$	
0740	26137EC		QUEUE WARNING PCMS	42.00	MONT		\$	
0750	26138EC		QUEUE WARNING PORTABLE RADAR SENSORS	42.00	MONT		\$	
0760	26228EC		ELECTRONIC DELIVERY MGMT SYSTEM	1.00	LS		\$	

Section: 0003 - TRAFFIC LOOPS

LINE	BID CODE	ALT	DESCRIPTION	QUANTITY	UNIT	UNIT PRIC	FP	AMOUNT
0770	04793		CONDUIT-1 1/4 IN	320.00	LF		\$	
0780	04795		CONDUIT-2 IN	80.00	LF		\$	
0790	04820		TRENCHING AND BACKFILLING	360.00	LF		\$	
0800	04829		PIEZOELECTRIC SENSOR	18.00	EACH		\$	
0810	04830		LOOP WIRE	7,940.00	LF		\$	
0820	04895		LOOP SAW SLOT AND FILL	1,800.00	LF		\$	
0830	20359NN		GALVANIZED STEEL CABINET	8.00	EACH		\$	
0840	20360ES818		WOOD POST	16.00	EACH		\$	
0850	20391NS835		ELECTRICAL JUNCTION BOX TYPE A	8.00	EACH		\$	

Section: 0004 - MOBILIZATION/DEMOBILIZATION

LINE	BID CODE	ALT	DESCRIPTION	QUANTITY	UNIT	UNIT PRIC	FP	AMOUNT
0860	02568		MOBILIZATION	1.00	LS		\$	
0870	02569		DEMOBILIZATION	1.00	LS		\$	